

**REPORT AND RECOMMENDATION**

**FOR THE**

**DESIGNATION OF THE**

**SOUTH PERSON/SOUTH BLOUNT**

**HISTORIC OVERLAY DISTRICT**

Adopted by the Raleigh Historic Districts Commission  
Date

**THE RALEIGH HISTORIC DISTRICTS COMMISSION**

Fred Belledin, Chair  
Jane Forde, Vice-chair  
Curtis Kasefang, Secretary/treasurer  
Will Alphin  
Matthew Brown  
Jannette Coleridge-Taylor  
Nick Fountain  
Esther Hall  
Greg Hatem  
Scott Shackleton  
Flora Hatley Wadelington  
Barbara Wishy

**CITY OF RALEIGH PLANNING DEPARTMENT**

Mitchell Silver, Planning Director

Dan Becker, Executive Director of the  
Raleigh Historic Districts Commission

## BACKGROUND

The City Council may designate a “historic overlay district” by zoning ordinance according to §10-2052 of the Raleigh City Code. These procedures are enabled by North Carolina General Statutes, Chapter 160A-400.1 through 160A-400.14. The city has designated five local historic districts: Oakwood (1975), Blount Street (1976), Capitol Square (1976), Boylan Heights (1984), and Moore Square (1992).

In 2000 City Council recognized the historic significance of the 500 block of South Person and South Blount streets by including a historic preservation element in the city-adopted *500 Block S. Person/S. Blount Area Redevelopment Plan*. The plan specifically notes historic overlay district zoning as a tool to stabilize the historic character of the neighborhood, also “maintain[ing] the residential character of this area.”<sup>1</sup>

The Raleigh Historic Districts Commission (RHDC) was tasked with implementing the historic preservation element of the plan, which is the consideration of a historic overlay district (HOD). To accomplish this, City Council funded the preparation of a historic overlay district designation report, with RHDC appointed as the administrator of the project; a consultant was hired and an initial draft was completed. Due to scarce resources, the draft was not finalized in 2000. The project remained on the on the Department of City Planning’s work program, however, and the consideration of designating the South Person/South Blount project area as a local historic overlay district is included as an action item in the 2030 Comprehensive Plan [HP 2.6].

## RECOMMENDATION

The Raleigh Historic Districts Commission reviewed this report at its meeting on **DATE**, following a neighborhood meeting held on March 28, 2011. The commission makes the following recommendations to the City Council:

1. That the South Person/South Blount project area be designated as a historic overlay district according to the boundary described in the “Proposed South Person/South Blount Historic Overlay District” map included in this report.
2. That the historic development standards to be applied by the Raleigh Historic Districts Commission in consideration of applications for Certificates of Appropriateness be approved as described in this report.

---

<sup>1</sup> *500 Block S. Person/S. Blount Area Redevelopment Plan* item VI.B.2.b, p. 7.

## 2030 COMPREHENSIVE PLAN SIGNIFICANCE

The Historic Preservation Element of the 2030 Comprehensive Plan offers guidance to sustain and promote the identity of Raleigh as a city with great historic communities. It includes recommendations to promote preservation; enhance planning, regulatory and incentive tools; and improve coordination among stakeholders who impact the preservation of Raleigh's cultural and architectural heritage. The policies of the Historic Preservation Element advance all six vision themes that serve as the overarching goals of the 2030 Comprehensive Plan.

The following policies of the 2030 Comprehensive Plan render further support to the creation of historic overlay districts where appropriate, to help preserve the historic identity of Raleigh:

### **Policy HP 1.2 Cultural and Historic Resource Preservation**

Identify, preserve, and protect cultural and historic resources including buildings, neighborhoods, designed and natural landscapes, cemeteries, streetscapes, view corridors, and archaeological resources.

### **Policy HP 2.3 Raleigh Historic Designation**

Encourage and sponsor the designation of eligible historic resources for local protection.

### **Policy HP 2.4 Protecting Historic Neighborhoods**

Protect the scale and character of the City's historic neighborhoods while still allowing compatible and context-sensitive infill development to occur.

### **Action HP 2.6 Downtown Historic Overlays**

Consider designating local historic overlay districts in downtown for Fayetteville Street National Register district, Depot National Register district, and **South Person-South Blount** Streets redevelopment plan area. [emphasis added]

### **Policy HP 4.5 Support for Neighborhoods**

Support neighborhood efforts to pursue both federal and Raleigh historic designations, and to make use of zoning overlay districts.

**Policy H 1.6 Housing Preservation**

Encourage the preservation of existing housing units whenever feasible, especially structures of historic or architectural significance.

**Policy ED 6.4 Cultural Resource Promotion**

Work with local historic preservation and arts groups to identify and promote Raleigh's cultural resources.

**Policy UD 1.1 Protecting Neighborhood Identity**

Use Neighborhood Conservation Overlay Districts (NCOD), Historic Overlay Districts (HOD), or rezonings to retain the character of Raleigh's existing neighborhoods and strengthen the sense of visual order and stability.

**Policy UD 5.5 Areas of Strong Architectural Character**

Preserve the architectural continuity and design integrity of historic districts and other areas of strong architectural character. New development within such areas does not need to replicate prevailing architectural styles exactly but should be complementary in form, height, and bulk.

**HISTORIC SIGNIFICANCE**

The project area is representative of several facets of Raleigh's African American urban historic significance during the mid-nineteenth century through the beginning of integration:

1. Architecture: The South Person/South Blount district contains buildings that are primarily residential in nature, peppered with a handful of small-scale commercial and institutional buildings throughout. Modest in size and scale, the buildings show a progression of architectural styles.
2. Archaeology: The block bounded by E. Cabarrus, S. Blount, E. Lenoir, and S. Wilmington streets has high potential for yielding information on urban African American life during the period of significance. The site of several extant landmarks including the Dr. M.T. Pope House (a Raleigh Historic Landmark), the Lincoln Theatre, and Stronach's Alley, this block also contains the site of the city's short-lived tobacco industry and the historically significant St. Ambrose Church, which survives in the memories of long-time residents.

3. Neighborhood/Community: The South Person/South Blount project area retains an urban residential feel with elements of commercial development. Historically this has been an affordable neighborhood within walking distance of Raleigh's urban core.

The South Person/South Blount Historic District research report more fully describes these themes. A copy of the research report is attached.

### **URBAN DESIGN SIGNIFICANCE**

The designation of the South Person/South Blount District will put in place an important tool for achieving the goals outlined in the 2030 Comprehensive Plan and the *500 Block S. Person/S. Blount Area Redevelopment Plan*. Pertinent objectives include:

1. Preserving the historic architecture and urban cultural landscapes that are significant to the city's history and development.
2. Retaining residential character in an area with significant development pressure threatening its still-affordable community.
3. Promoting infill development that respects and enhances the existing scale and density of the area.
4. Providing smaller commercial structures with lower overhead costs to serve small business needs in the neighborhood.

### **HISTORIC DEVELOPMENT STANDARDS**

The intention of a historic overlay district is "to insure insofar as possible that the exterior portion of buildings, structures and their appurtenant features located within an Historic Overlay District...shall remain in harmony with other buildings, structures and appurtenant features in the District..." Raleigh City Code §10-2052(e)(4) lists documents entitled *Design Guidelines for Raleigh Historic Districts* and *The Secretary of the Interior's Guidelines for Rehabilitating Historic Buildings* as the development standards for Raleigh historic districts, and it is recommended that these standards be used for the South Person/South Blount Historic Overlay District.

## **SOUTH PERSON/SOUTH BLOUNT HISTORIC OVERLAY DISTRICT BOUNDARY JUSTIFICATION**

The district boundaries were identified in the process of adopting the *500 Block S. Person/S. Blount Area Redevelopment Plan*. The boundaries include contributing buildings and areas of high potential for archaeological deposits, as well as undeveloped land and non-contributing structures where necessary to protect the historic urban context from inappropriate development.



## **SOUTH PERSON/SOUTH BLOUNT HISTORIC DISTRICT MAP**




The following map graphically describes the boundary for the proposed South Person/South Blount Historic Overlay District.

# PROPOSED SOUTH PERSON - SOUTH BLOUNT HISTORIC OVERLAY DISTRICT

Raleigh, Wake County  
North Carolina

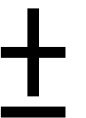
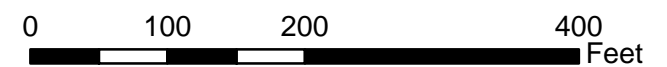
March 2011

-  Proposed District Boundary
-  East Raleigh - South Park National Register District Boundary

-  Contributing Resource
  -  Contributing Archaeological Resource
  -  Non-contributing Resource
- See inventory for status of all outbuildings

## Address  
VL Vacant

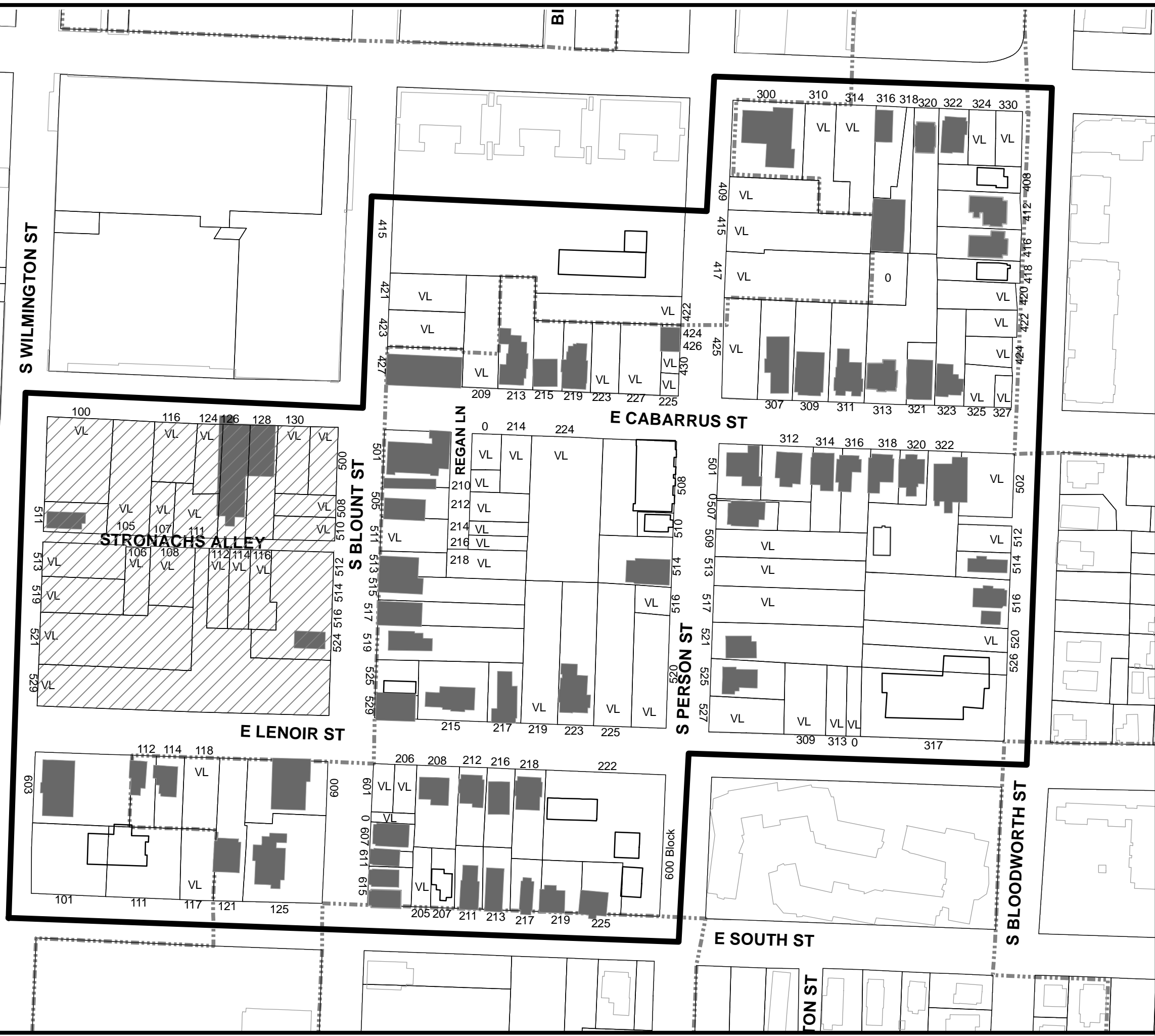
1 inch = 140 feet



## City of Raleigh



This document is a graphic representation only, created from the best available sources. The City of Raleigh assumes no responsibility for any errors, or misuse of this document.





**HISTORIC RESEARCH REPORT**  
**FOR THE**  
**DESIGNATION OF THE SOUTH PERSON/SOUTH BLOUNT DISTRICT**  
**AS A**  
**HISTORIC OVERLAY DISTRICT**

Prepared for the  
**Raleigh Historic Districts Commission**

by

Dan Pezzoni  
Landmark Preservation Associates

Raleigh

January 2003, Revised April 2010

Revised by RHDC February 2011

The South Person/South Blount project area lies within the original limits of the City of Raleigh as established in 1792. The potential local historic district is historically, architecturally, and archaeologically significant, possessing a mix of residential, commercial, institutional, and community landmark resources representative of African American life in Raleigh from the late nineteenth century through the beginning of the era of integration. A portion of the project area is listed in the National Register of Historic Places as part of the East Raleigh-South Park Historic District, and three resources within the project area are individually listed in the National Register: the Masonic Temple Building, the Dr. M.T. Pope House, and the Rogers-Bagley-Daniels-Pegues House. These properties, as well as the Tupper Memorial Baptist Church, are designated Raleigh Historic Landmarks. Finally, a city block within the project area, bounded by E. Cabarrus, S. Wilmington, E. Lenoir, and S. Blount streets, is archaeologically sensitive due to its high potential to yield cultural resources.

### **Statement of Significance**

Little is documented about the project area's development prior to the Civil War, although the survival of the ca. 1855 Rogers-Bagley-Daniels-Pegues House confirms early residential development in the area. Presumably, whites were the area's principal landowners before the war, although African Americans would have comprised a sizable percentage of the area's population, as blacks represented nearly fifty percent of Raleigh's population in the late antebellum period.<sup>1</sup>

The Reconstruction period marks the beginning of the project area's development as part of an African American neighborhood. Freedmen migrated to Raleigh from surrounding rural areas in hopes of securing economic advancement and the protection of federal authorities, and African American neighborhoods sprang up around the periphery of the city. Southeast Raleigh, the section of the city that embraces the project

---

<sup>1</sup> Wright et al, "East Raleigh-South Park Historic District," 8.2; Parham, "Rogers-Bagley-Daniels-Pegues House," 8.1; Simmons-Henry and Edmisten, *Culture Town*, 77; and Mattson, "Evolution of Raleigh's African-American Neighborhoods," 3, 17-18.

area, proved particularly attractive to blacks due to its proximity to Shaw University. Founded in 1866 as the Raleigh Institute and relocated to its present site in 1870, the traditionally African American university commanded “the heart of the negro district.”<sup>2</sup> Others have written that Shaw “greatly stimulated black development in South Raleigh” and aided in the creation of Raleigh’s African American professional elite. Shaw University was founded by a white Baptist missionary, Henry M. Tupper, who established Second Baptist Church in conjunction with the school. Tupper Memorial Baptist Church, as the church is now known, stands at **317 S. Blount** in the project area and has been described as “one of the leading institutions in post-war Raleigh’s emerging black community.” Designated a Raleigh Historic Landmark in 2000, the present building was erected in 1912-13 and remodeled in 1957.<sup>3</sup>



*Rogers-Bagley-Daniels-Pegues House*



*Tupper Memorial Baptist Church*

During the late nineteenth century African Americans were employed in the tobacco warehouses and factories that were erected in and near the project area. William Carter Stronach (1844-1901), a prosperous white businessman and civic leader, spearheaded Raleigh’s efforts to become a tobacco market. Stronach was a partner in the wholesale-retail grocery business W.C. and A.B. Stronach, which employed approximately thirty

---

<sup>2</sup> So described by white civic leader Josephus Daniels.

workers, some of them African-American, at three store locations in downtown Raleigh. Stronach built Raleigh's first tobacco sales warehouse in 1884 at the corner of Wilmington and Davie streets adjacent to the project area. Soon thereafter a prizery, a factory for preparing tobacco for shipment, was constructed on the southeast corner of Wilmington and Cabarrus streets. Raleigh failed to develop as a tobacco market, and Stronach's warehouse and other facilities were eventually torn down.

Possibly related to the tobacco industry was the development of a small African American enclave on property Stronach owned near the Wilmington-Cabarrus prizery. Transecting the block bounded by E. Cabarrus, S. Wilmington, E. Lenoir, and S. Blount streets, **Stronach's Alley** was a hub of activity. Black carpenter Bibb Matthews (perhaps Robert B. Matthews) named the enclave after his employer W.C. Stronach. It is possible that Matthews, with his father W.H. Matthews, identified as a bricklayer and plasterer in period business directories, and other members of the Matthews family also active in the building trades, were responsible for the construction of houses throughout the project area.

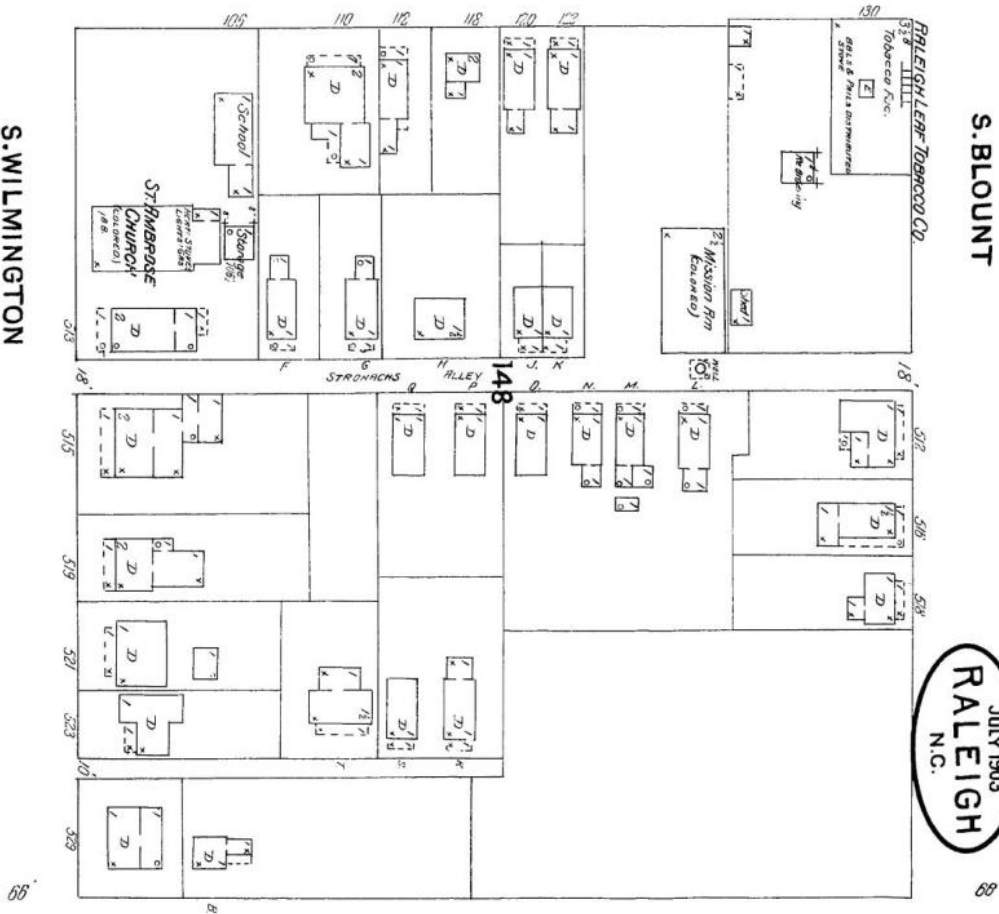
The block containing the Stronach's Alley enclave was a nexus of residential, institutional, and commercial life. As of 1903 residents of the block worked in a variety of trades, with job descriptions such as laborer, porter, gardener, coachman, butler, painter, physician, driver, janitor, pastor, manager.<sup>4</sup> In addition to residences, a church, two mission rooms (also labeled "Negro Hall"), a movie theater, a hospital, and commercial uses for the cotton and automobile industries were present during the

---

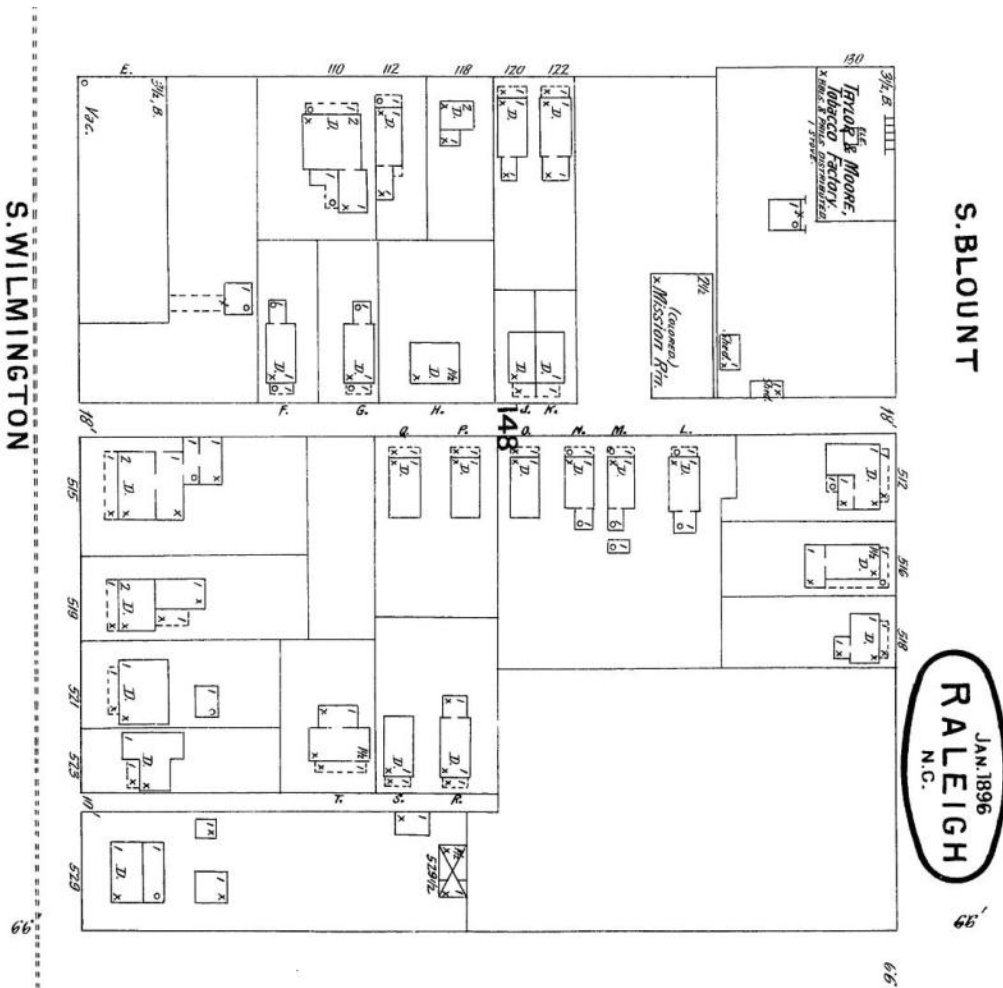
<sup>3</sup> Wright et al, "East Raleigh-South Park Historic District," 7.64, 8.5; Mattson, "Evolution of Raleigh's African-American Neighborhoods," 16-17; Simmons-Henry and Edmisten, *Culture Town*, 56; and 1888 and 1896 Sanborn maps.

<sup>4</sup> 1903 Hill's City Directory.

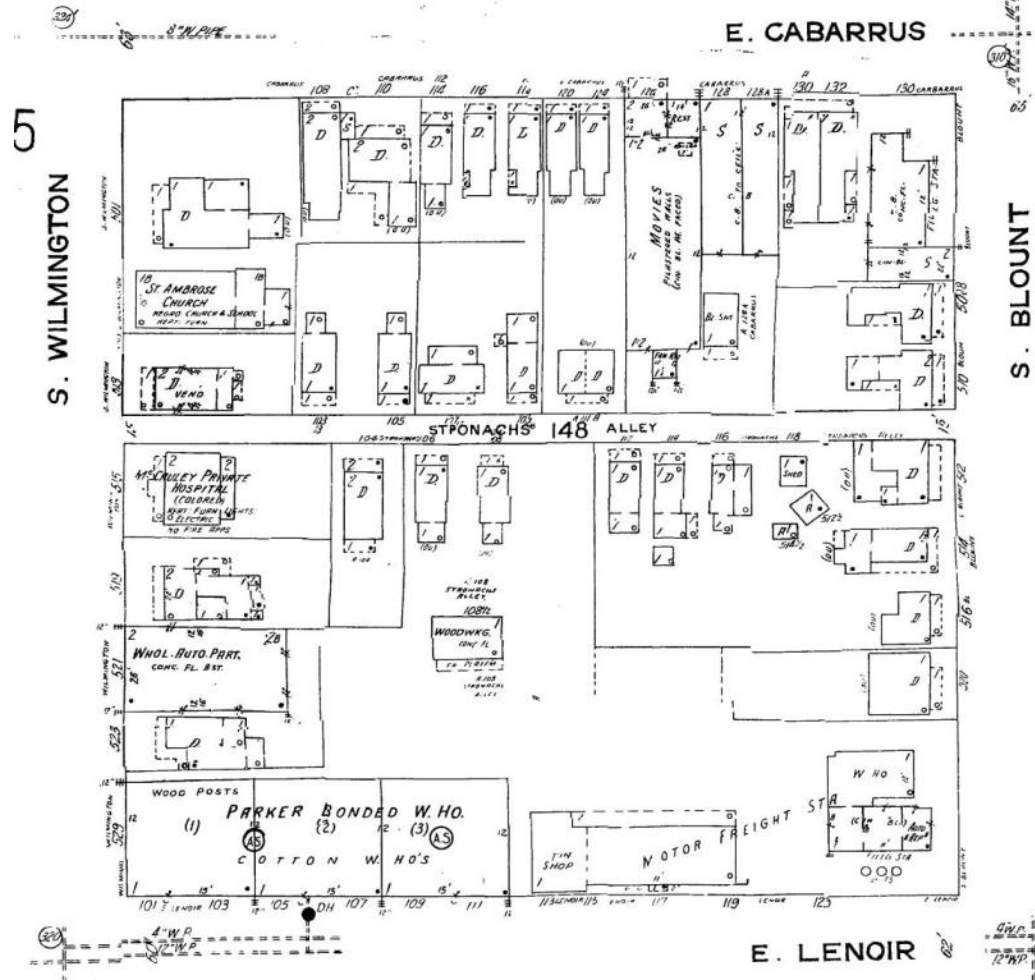
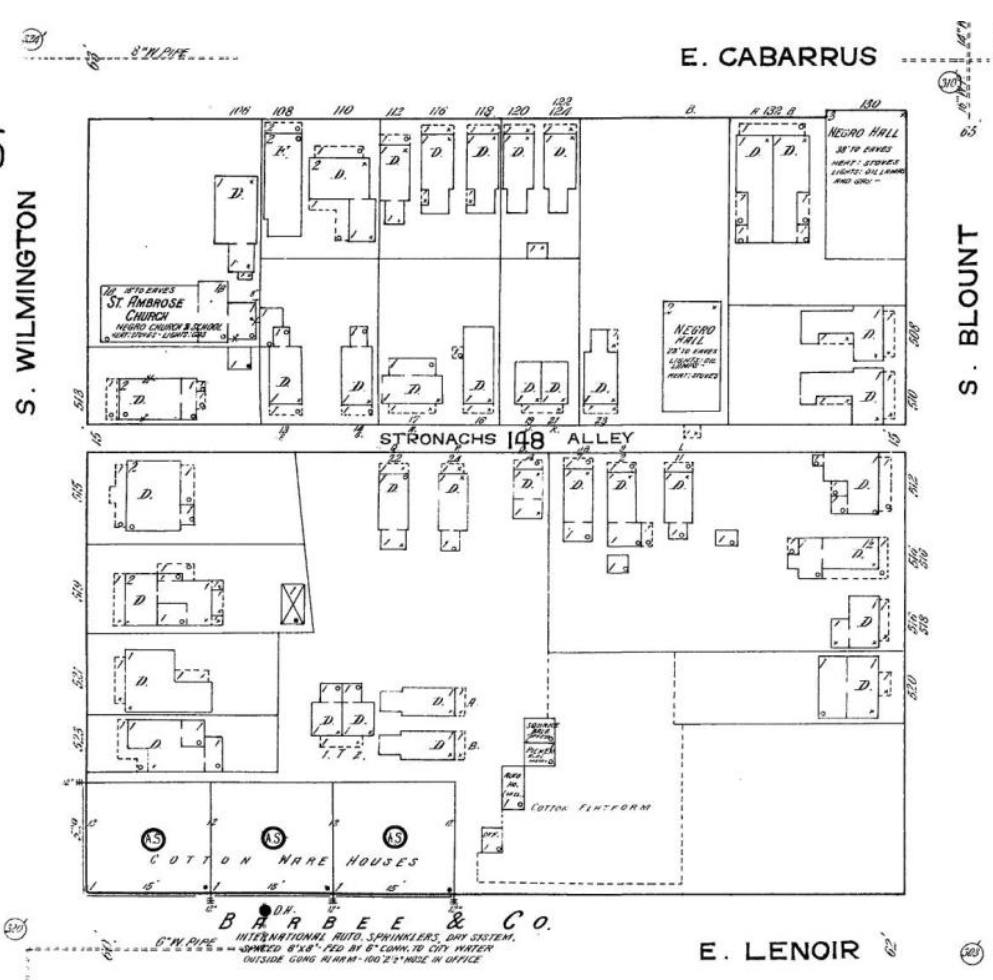
period of significance. Sanborn maps show the evolution of the block and give an indication of the broad array of artifacts that may be present on the site:



Stonach's Alley ( Sanborn Map, 1903)



Stonach's Alley ( Sanborn Map, 1896)



Stronach's Alley ( Sanborn Map, 1914)

Stronach's Alley ( Sanborn Map, 1914-1950)

For example, historic St. Ambrose Church, known first as St. Augustine's, was built in 1868 on the northwest corner of N. Dawson and W. Lane; in 1895 the church was moved to S. Wilmington Street, where it played a large role in the neighborhood until its demolition in 1965.<sup>5</sup> Stronach's Alley survives as a roadway connecting Wilmington and Blount streets.<sup>6</sup> While the majority of the land in the city block encompassing Stronach's Alley is now vacant and used for parking, development requiring extensive digging has not occurred. There is, therefore, a high potential for the archaeological discovery of material cultural remains that would foster a better understanding of urban African American daily life during the late nineteenth and early twentieth centuries. Excavation of this block could yield information on social and material inequality between whites and blacks in Raleigh. It might also provide information for a comparison of urban and rural African American landscapes and material culture. Finally, a survey might tell the story of the block's rapid change from residential and commercial activities during the mid-twentieth century.

Pictorial sources and maps from the late nineteenth and early twentieth centuries, supplemented by surviving resources, provide insight into the architectural character of the project area. One-story frame houses with gable roofs predominated, and front porches and rear kitchen wings with side porches expanded the living and working space of these small houses. Sanborn insurance maps from the 1880s and 1890s indicate a number of duplexes and also long one-story houses with narrow gable ends facing the street, or "shotgun" houses.

Although the South Person/South Blount district's houses were generally small, they often possessed stylish exteriors, as demonstrated by surviving examples. The late nineteenth century, well-preserved shotgun house at **514 S. Bloodworth** boasts Victorian ornamentation such as delicate sawn porch railings and post brackets and a quatrefoil

---

<sup>5</sup> Simmons-Henry and Edmiston, *Culture Town*, 102.

<sup>6</sup> Stronach, "Geranium Valley Stronachs, 29, 34-37; *Branson's North Carolina Agricultural Almanack . . . 1891.*, 184; *Directory of the City of Raleigh*, 108; Johnson and Murray, *Wake*, 132-133; Sanborn maps.

gable vent. Similar in form, a row of shotgun houses constructed ca. 1888-96 stood on Stronach's Alley.



514 S. Bloodworth Street



213 E. South Street

Also found in the project area are "Triple-A" houses, which feature decorative center gables on their side-gable roofs. The four houses on the east side of the **600 block of South Blount Street** feature diamond-shaped and quatrefoil vents.



615 S. Blount Street



309 E. Cabarrus Street

One exception to the small scale of the project area's houses from this period is the two-story brick residence of Dr. Manassas Thomas Pope, constructed in 1900 at **511 S. Wilmington**. The Pope House features a two-tier front porch with a second-story "sun parlor" enclosure and, on a side elevation, a circular stained-glass side window. The house, which also contains Dr. Pope's office, was individually listed in the National



Register of Historic Places in 1999.<sup>7</sup> This house is representative of larger-scaled houses present along the eastern side of the 500 block of S. Wilmington Street at the turn of the century. On Sanborn maps, along S. Wilmington between Stronach's Alley and E. Lenoir Street, were five dwellings similar in scale to the Pope House. Additional two-story Victorian-style houses survive, such as **215 E. Cabarrus**.



511 S. Wilmington Street



213, 215, and 219 E. Cabarrus Street

Beginning in the 1910s the Victorian housing of preceding decades was supplemented by new house styles and forms. Craftsman-style bungalows, vernacular houses with Craftsman-style elements, and foursquare-form houses were popular during the 1920s—examples survive at **312 and 314 E. Cabarrus** and **521 S. Person**. Later houses with Colonial Revival detail began to appear; one of the project area's more sophisticated houses of this period is the ca. 1920 Charles Frazier House at **121 E. South**, a gambrel-roofed dwelling with Craftsman and Colonial Revival accents. Frazier was the secretary-treasurer of the Capital Building & Loan Association and a cashier with the Mechanics & Farmers Bank. Frazier's house stands next to the aforementioned antebellum Rogers-Bagley-Daniels-Pegues House, which was acquired by Shaw University's African American dean of theology, Albert W. Pegues, in 1919.<sup>8</sup>

<sup>7</sup> Mattson, "Evolution of Raleigh's African-American Neighborhoods," 13; Zogry, "Dr. M. T. Pope House;" Sanborn maps.

<sup>8</sup> Wright et al, "East Raleigh-South Park Historic District," 7.100; Parham, "Rogers-Bagley-Daniels-Pegues House," 8.3.



312 and 314 E. Cabarrus Street



121 E. South Street

Gothic-inspired architecture is present in the project area as well, in the ca. 1922 Davie Street Presbyterian Church at **300 E. Davie**, and the ca. 1923 Gethsemani Seventh Day Adventist Church at **501 S. Person**.



300 E. Davie Street



501 S. Person Street

The project area is located several blocks south of East Hargett Street, Raleigh's African American "Main Street," and this proximity combined with the area's location in downtown Raleigh helped foster the development of a secondary commercial focus. Examples of industrial/commercial form buildings from the early twentieth century include those located at **318 E. Davie** (ca. 1912), now a residence, and **529 S. Blount** (ca. 1929).

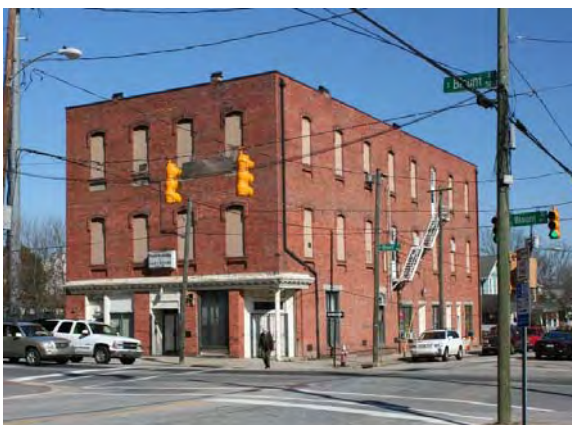


318 E. Davie Street



529 S. Blount Street

Another contributing factor was the presence of the Masonic Temple Building at **427 S. Blount**. From its construction in 1907 the Masonic Temple functioned as a sort of incubator for black-owned businesses, in addition to its role in supporting the institutional needs of the community. The Masonic Temple may have been a factor in the location of the Lincoln Theatre at **126 E. Cabarrus**, a simple ca. 1940 brick building graced by an Art Deco marquee and adjoined by a slightly later commercial block with basket-weave brick parapet panels.



427 S. Blount Street



126 E. Cabarrus Street

The landscape of the 500 block of S. Wilmington Street, which contained the Pope House and similar large scale houses, as well as the north side of the 600 block of E. Lenoir, changed dramatically between 1914 and 1950. During this period the residences gave

way to an African American hospital, wholesale and warehouse facilities, and businesses related to the automobile industry. The majority of this block is now vacant, but likely contains significant archaeological deposits related to early to mid-century industry.

The mixed residential-commercial character that the Person and Blount corridors acquired by mid-century is apparent in a 1947-48 aerial view published in *Culture Town* (p. 51).<sup>9</sup> Some commercial construction, such as the 1948 substantially altered, gable-fronted stuccoed masonry building at **510 S. Person**, dates to the period of prosperity that followed the Second World War. In the 1950s the project area's non-domestic architecture began to show the influence of modernism. The one-story brick commercial triplex at **600 S. Blount** exhibits characteristics of the style such as a flat roof and aluminum-frame display windows. The modernist flat-roofed brick headquarters building of the General Baptist State Convention of North Carolina at **603 S. Wilmington**, built in 1953, features projecting and recessed entries with stack-bond surrounds and windows in projecting concrete frames.



600 S. Blount Street



603 S. Wilmington Street

The mid-twentieth century marked the high water mark of residential, commercial, and institutional development in the project area, but the period was also one of profound change that bettered the lives of the city's African American population while

paradoxically acting to weaken the project area's vitality. Integration alleviated the socioeconomic strictures that gave rise to Raleigh's separate African American neighborhoods, and the project area's residents and businessmen were freer to live, shop, and locate businesses elsewhere. The nationwide decline of downtown areas during the third quarter of the twentieth century also contributed to the deterioration of the project area. In the last quarter of the twentieth century and the first decade of the twenty-first, economic revitalization centered on Raleigh's commercial core has presented new challenges. Deteriorated or obsolete structures have been demolished for new construction and parking lots. Despite these losses, much of the area retains the historic character it had acquired by the mid-twentieth century. The area's historic residential character was strengthened in recent years by the relocation of six historic and modern houses to vacant lots or derelict properties on the block bounded by Bloodworth, Cabarrus, Davie, and Person streets.

### *Inventory*

The preparation of this report entailed architectural survey and historic documentation of the project area in order to assess the contributing significance and integrity of the area's historic resources. Integrity was assessed in part according to five criteria that were developed for an assessment of the district potential of Raleigh's College Park-Idlewild neighborhood. The five criteria are: integrity of roofline, trim, windows, exterior wall cladding, and porches. Resources that possess integrity for at least three of the five criteria are classified as contributing to a district. An additional criterion is used by the SHPO to assess the contributing status of historic resources that have been moved into an area from elsewhere. Whether the resources were threatened in the original location and whether they are compatible with their new context are considerations.<sup>10</sup>

---

<sup>9</sup> Brown and Bushong, "Masonic Temple Building;" Simmons-Henry and Edmisten, *Culture Town*, 51.

<sup>10</sup> Little, "College Park/Idlewild," 2-3; Ann V. Swallow email to Dan Pezzoni, February 17, 2010.

Inventory classifications: C: contributing based on architectural significance; C-archaeology: contributing based on potential archaeological significance; NC: noncontributing; VL: Vacant Lot

**408 S. Bloodworth Street**

**NC, ca. 2000**

Two-story frame house with an asphalt-shingled front-gable roof, a gabled one-story porch with classical columns, and 4/4 and 6/6 windows with fake muntins. The house was moved from a location several blocks away to its present lot ca. 2006-09.

**412 S. Bloodworth Street**

**C early/c. 1875**

One-story frame house with an asphalt-shingled hip roof, a front porch with replacement square wood columns and turned balusters, and replacement 1/1 windows. The house was moved from 210 or 214 S. Bloodworth Street to its present lot ca. 2006-09.

**416 S. Bloodworth Street**

**C ca. 1885**

One-story Late Victorian frame house with an asphalt-shingled triple-A side-gable roof, weatherboard siding, a front porch with replacement square wood columns and turned balusters, and replacement 1/1 windows. The house was moved from 218 S. East Street to its present lot ca. 2006-09.

**418 S. Bloodworth Street**

**NC ca. 2000**

Two-story frame house with an asphalt-shingled front-gable roof, a gabled one-story porch with classical columns and turned balusters, and 6/6 windows with fake muntins. The house was moved from a location several blocks away to its present lot ca. 2006-09.

**420 S. Bloodworth Street**

**VL**

**422 S. Bloodworth Street**

**VL**

**424 S. Bloodworth Street**

**VL**

**502 S. Bloodworth Street**

**VL**

**514 S. Bloodworth Street**

**C ca. 1880**

One-story Victorian shotgun-form frame house with weatherboard siding, a metal-sheathed front-gable roof, 6/6 windows, a front porch with a sawn balustrade and slender posts with sawn brackets, and a quatrefoil gable vent. The front entry is boarded up.

**512 S. Bloodworth Street**

VL

**516 S. Bloodworth Street**

**C late 19th century**

One-story frame house with vinyl siding, an asphalt-shingled hip roof, 3/1 and 6/6 windows, and a front porch with recently inserted (apparently salvaged) square posts with heavy molded caps.

**Cumbo's Barber Shop**

**518 S. Bloodworth Street (part of 516 S. Bloodworth Street parcel)**

**C 1933**

One-story, two-bay, concrete block commercial building with a shed roof with a stepped side parapet, a plate glass window, and a replacement front door. A mural depicting a fighter jet is painted on one side. Founded by African American barber Frank W. Cumbo between 1927 and 1938.<sup>11</sup>

**520 S. Bloodworth Street**

VL

**526 S. Bloodworth Street (see 317 E. Lenoir Street)**

**415 S. Blount Street**

**NC 1977**

One-story prefabricated metal building with garage bays for large vehicles, a drive-through canopy, and an office wing.

**421 S. Blount Street**

VL

**423 S. Blount Street**

VL

**Masonic Temple Building (RHL)**

**427 S. Blount Street**

---

<sup>11</sup> Wright et al, "East Raleigh-South Park Historic District," 7.45.

### **C 1907**

Three-story brick-veneer frame building with segmental-arched windows, a cutaway corner entry with a cast iron column, and street-level storefronts with metal cornices. The first-story windows have replacement 1/1 sashes and the upper-story windows are boarded up. The building is individually listed in the National Register and designated a Raleigh Historic Landmark.

### **500 S. Blount Street**

#### **C-archaeology**

Adjacent to Stronach's Alley, this property has potential as an archaeological site: Location of the Taylor & Moore Tobacco Factory [1896 Sanborn map]; location of the Raleigh Leaf Tobacco Factory [1903 Sanborn map]. Site of Negro Hall [1914 Sanborn maps].

### **Tupper Memorial Baptist Church**

#### **501 S. Blount Street**

#### **C 1912-13; 1957; 1976**

Tall one-story Gothic-influenced church of brick-veneered frame construction with corner entry towers, an asphalt-shingled front-gable roof, and 1957 remodelings including buttresses and round-arched windows (the veneer also dates to 1957). A memorial wing was added to the rear in 1976. Tupper Memorial Baptist Church is designated a Raleigh Historic Landmark. Previously the site of the Blount Street Baptist Church (Colored) [1896,1903,1909 Sanborn maps].

### **503 S. Blount Street**

#### **C late 19<sup>th</sup> century; ca. 1925**

One-story shotgun-form frame house with vinyl siding, an asphalt-shingled front-gable roof, a Craftsman front porch with remnant Victorian details, barred replacement 1/1 windows, and a modern two-story rear addition.

### **505 S. Blount Street**

#### **NC 1962; 1990s**

One-story concrete block building with an asphalt-shingled front-gable roof. Building originally commercial in function; recently remodeled as a garage.

### **508 S. Blount Street**

#### **C-archaeology**

Adjacent to Stronach's Alley, this property has potential as an archaeological site: Location of the Taylor & Moore Tobacco Factory [1896 Sanborn map]; location of the Raleigh Leaf Tobacco Factory [1903 Sanborn map]. Site of dwelling [1914 Sanborn map].

### **510 S. Blount Street**



### **C-archaeology**

Adjacent to Stronach's Alley, this property has potential as an archaeological site: location of the Taylor & Moore Tobacco Factory [1896 Sanborn map]; location of the Raleigh Leaf Tobacco Factory [1903 Sanborn map]. Site of dwelling [1914 Sanborn map].

### **511 S. Blount Street**

**VL**

### **512 S. Blount Street**

#### **C-archaeology**

Adjacent to Stronach's Alley, this property has potential as an archaeological site: location of dwelling [1896, 1903, 1909 Sanborn maps].

### **513 S. Blount Street**

**C ca. 1945**

Two-story gable-front building with brick piers at first story framing storefront. Asbestos shingles. Formerly Cannon Grocery Company.<sup>12</sup>

### **514 S. Blount Street**

#### **C-archaeology**

Adjacent to Stronach's Alley, this property has potential as an archaeological site: location of dwelling [1896, 1903, 1909 Sanborn maps].

### **516 S. Blount Street**

#### **C-archaeology**

Adjacent to Stronach's Alley, this property has potential as an archaeological site: location of dwelling [1896, 1903, 1909 Sanborn maps].

### **515 S. Blount Street**

**C ca. 1945**

One-story concrete block commercial building with brick facing, shed roof with parapet, projecting ca. 1980 plastic sign and display windows. Building may have housed a dry cleaning business.

### **517 S. Blount Street**

**C ca. 1945**

One-story concrete block commercial building with brick facing, shed roof with parapet, double entries, and barred display windows and doors with transoms.

### **519 S. Blount Street**

---

<sup>12</sup> Wright et al, "East Raleigh-South Park Historic District," 7.124.

**C ca. 1905**

Two-story frame house with weatherboard siding, an asphalt-shingled front-gable roof with diamond-shaped vents, a one-story wraparound porch with turned posts, sawn brackets, and a spindle frieze, and 2/2, 4/4, and replacement 1/1 windows. The house is used as offices by The Carolinian newspaper.

**524 S. Blount Street**

**C mid to late 20th century**

One-story concrete block and brick building with barred 2/2 windows. Previous site of dwelling [1914 Sanborn maps].

**525 S. Blount Street**

**NC mid twentieth century**

One story stucco building with flat, faux Mansard-style roof, a glass storefront barred 4/2 windows, and fire stair.

**529 S. Blount Street**

**C ca. 1929**

Two-story building of concrete block (perhaps veneer) with flat roof and terra-cotta flashing, with an inset corner drive-through for a former service station, a signage panel in the front parapet, an asphalt-shingled pent awning, and replacement 1/1 windows. Housed 1930s service station.<sup>13</sup>

**600-604 S. Blount Street**

**C ca. 1951**

One-story brick commercial building with a flat roof, an angled corner entry, and plate glass, glass block, and industrial windows. At the rear of this lot, fronting E. Lenoir, is a stone retaining wall and concrete stairs.

**601 S. Blount Street**

VL

**607-609 S. Blount Street**

**C ca. 1910**

One-story, four-bay Victorian frame duplex with asbestos-shingle siding, an asphalt-shingled triple-A gable roof with a diamond-shaped vent in the front gable, double entries, replacement 1/1 windows, and a concrete slab front porch with turned posts on brick pedestals.

---

<sup>13</sup> Wright et al, "East Raleigh-South Park Historic District," 7.124.

**611-613 S. Blount Street**

**C ca. 1910**

One-story, four-bay Victorian frame duplex with vinyl siding, an asphalt-shingled triple-A gable roof with a quatrefoil diamond-shaped vent in the front gable, a 9/9 historic window, replacement windows, double entries, and a concrete slab front porch with replacement wood posts.

**615-617 S. Blount Street**

**C ca. 1910**

One-story, four-bay Victorian frame duplex with vinyl siding, an asphalt-shingled triple-A gable roof with a diamond-shaped quatrefoil vent in the front gable, replacement 1/1 windows, double entries, and a concrete slab front porch with replacement wood posts.

**619-621 S. Blount Street (part of 615 S. Blount Street parcel)**

**C ca. 1910**

One-story, four-bay Victorian frame duplex with vinyl siding, an asphalt-shingled triple-A gable roof with a tall, narrow, diamond-shaped vent in the front gable, a concrete slab front porch with modern wood posts and balusters, double entries, and round-arched and square-headed replacement windows.

**0 E. Cabarrus Street**

**VL**

**100 E. Cabarrus Street**

**C-archaeology**

This property has potential as an archaeological site: location of the Lipscomb & Faison Tobacco Prize House [1888 Sanborn maps]; location of the St. Ambrose Church (Colored) and School (fronting S. Wilmington Street) [1903, 1914 Sanborn maps].

**116 E. Cabarrus Street**

**C-archaeology**

This property has potential as an archaeological site: site of dwelling(s) [1896, 1903, 1909, 1914 Sanborn maps].

**124 E. Cabarrus Street**

**C-archaeology**

This property has potential as an archaeological site: site of dwelling(s) [1896, 1903, 1909, 1914 Sanborn maps].

**Lincoln Theatre**

**126 E. Cabarrus Street**

**C ca. 1940**

Two-story brick theater with stuccoed front, Art Deco marquee, shed roof with stepped side parapets, a mural on the west elevation, and one-story side wing.

**128 E. Cabarrus Street**

**C ca. 1940**

One-story brick and concrete block commercial building with soldier course and basketweave panels in front parapet, display windows, and modern garage door. There was a (Colored) Mission Room, or Negro Hall, located at the rear of this property, accessed by Stronach's Alley [1896, 1903, 1909, 1914 Sanborn maps].

**130 E. Cabarrus Street**

**C-archaeology**

Adjacent to Stronach's Alley, this property has potential as an archaeological site: site of dwellings [1914 Sanborn maps].

**209 E. Cabarrus Street**

**VL**

**Jones-Williams House**

**213 E. Cabarrus Street**

**C 1923**

Two-story Craftsman frame house with asbestos-shingle siding, an asphalt-shingled front-gable roof, gable brackets, some replacement windows, an attached rear carport, and a one-story wraparound porch with battered wooden posts on brick piers and an enclosed side. "First owner was Dr. George T. Jones, a black pharmacist and manager of Mallette Drug Co. His wife, Alice Jones, a school teacher, sold the house to the current owner J.E. Williams. According to Mr. Williams, the house was constructed by Lucius Wilcox, who is the only black builder listed in the 1925 directory."<sup>14</sup> In front of the house at the curb is a marble carriage stone inscribed with the name Davis, probably a relic from an earlier house on this site.

**214 E. Cabarrus Street**

**VL**

**M. D. Haywood House**

**215 E. Cabarrus Street**

**C ca. 1917**

Two-story Neoclassical Revival foursquare form frame house with wood-shingle siding

---

<sup>14</sup> Wright et al, "East Raleigh-South Park Historic District," 7.85.

on the second story, weatherboard siding on the first story, an asphalt-shingled pyramidal roof, 1/1 windows, a two-story side bay window, and a one-story front porch with a pediment and classical columns. "Haywood family lived here from 1917 to after 1938. M.D. Haywood, a black postal carrier, who was later a Justice of the Peace and Notary Public, was the first occupant."<sup>15</sup>

### **Jones-Mial House**

#### **219 E. Cabarrus Street**

**C ca. 1917**

One-story Neoclassical Revival frame cottage with asbestos siding, an asphalt-shingled pyramidal roof with a front gable with decorative wood-shingle sheathing, 6/1 and 6/6 barred windows, a corbelled brick chimney, and a front porch with square wood columns. "Originally owned by Dr. George T. Jones, this house was sold to Rev. George A. Mial when Dr. Jones moved to #213 E. Cabarrus. Nina I. Mial, a black hairdresser owned the house in 1938."<sup>16</sup>

#### **223 E. Cabarrus Street**

**VL**

#### **224 E. Cabarrus Street**

**VL**

#### **227 E. Cabarrus Street**

**VL**

#### **307 E. Cabarrus Street**

**C ca. 1918**

Two-story frame house with aluminum siding, an asphalt-shingled front-gable roof, 6/6 and 1/1 windows, a front entry with sidelights, and an engaged two-tier front porch with two-story brick pillars, metal balustrades, and an enclosed second tier (possibly a sleeping porch).

#### **309 E. Cabarrus Street**

**C late 19th century**

One-story Victorian frame house with aluminum siding, a metal-sheathed triple-A gable roof, a front porch with wood posts with elaborate sawn brackets and balustrade, replacement 6/6 windows, and replacement diamond-shaped gable vents.

#### **311 E. Cabarrus Street**

---

<sup>15</sup> Wright et al, "East Raleigh-South Park Historic District," 7.85.

<sup>16</sup> Wright et al, "East Raleigh-South Park Historic District," 7.85.

**C late 19th century**

One-story Victorian, four-bay frame house with weatherboard siding, an asphalt-shingled triple-A gable roof, 2/2 windows, round and diamond-shaped gable vents, converted to a duplex subsequent to 1914, with dual front porches and front doors.

**Leonidas Frazier House**

**312 E. Cabarrus Street**

**C ca. 1922**

Two-story, three-bay Craftsman frame house with weatherboard siding, an asphalt-shingled pyramidal roof with a hipped front dormer and exposed rafter ends, a one-story front porch with battered wood posts on brick piers and a gabled extension, a front entry with old sidelights and a replacement door, and replacement 2/1 windows. First owner was Leonidas Frazier, an African American who owned the house through 1938.<sup>17</sup>

**313 E. Cabarrus Street**

**C 1895**

Two-story Victorian form house with weatherboard siding, an asphalt-shingled hip roof with hipped ventilation dormers, a one-story front porch with replacement square wood columns and balusters, a smaller second-story porch engaged under the main roof, and replacement 1/1 windows. The house was moved from 402 E. Hargett Street to its present lot ca. 2006-09.

**314 E. Cabarrus Street**

**C ca. 1926**

Two-story Craftsman frame house with original brick veneer, an asphalt-shingled pyramidal roof with a hipped front ventilation dormer, a one-story front porch with patterned battered wood posts on brick piers, and 9/1 windows.

**316 E. Cabarrus Street**

**C late 19th century**

One-story Victorian frame house with asymmetrical angled 2-story bay, weatherboard siding, an asphalt-shingled triple-A gable roof, a front porch with chamfered posts and sawn brackets and balusters, 4/4 windows, a three-pane transom over the front entry, and diamond-shaped gable vents.

**318 E. Cabarrus Street**

**C late 19th century**

One-story Victorian frame house with aluminum siding, an asphalt-shingled triple-A gable roof, a front porch with replacement square wood columns, 4/4 windows, a one-

---

<sup>17</sup> Wright et al, "East Raleigh-South Park Historic District," 7.90.

pane transom over the front entry, and peaked gable vents.

**320 E. Cabarrus Street**

**C- late 19th century; ca. 1960**

One-story Victorian frame house with brick veneer added ca. 1960, an asphalt-shingled triple-A gable roof, a front porch rebuilt in 2002, and replacement 1/1 windows.

**321 E. Cabarrus Street**

**C late 19th century; ca. 1930**

One-and-a-half-story, three-bay frame house with aluminum siding, an asphalt-shingled cross-gable roof, a Craftsman front porch with battered wooden posts on brick piers and a solid railing, 6/6 windows, and floor-to-ceiling 4/6 windows on the porch.

**322 E. Cabarrus Street**

**C ca. 1930**

Two-story, six-bay building of concrete block construction with a brick front and a flat roof. Changes to the building since 1989 include the replacement of 6/1 windows with modern 6/1 sashes, addition of a small bay window on the front, and removal of stoops over the entries.

**323 E. Cabarrus Street**

**C late 19th century; ca. 1960**

One-story frame, three-bay house with an offset gabled front wing, brick veneer, an asphalt-shingled gable roof, a front porch with replacement metal supports, and replacement 3/1 windows, resulting in a Minimal Traditional feel.

**325 E. Cabarrus Street**

**VL**

**327 E. Cabarrus Street**

**VL**

**Davie Street Presbyterian Church**

**300 E. Davie Street**

**C 1922; ca. 1980**

One-story, seven-bay Gothic-influenced frame church with brick veneer, a slate gable roof, a corner tower with crenellation and corbelling, lancet-arched stained glass windows, circular windows, and a modern rear addition. The 1909 Sanborn maps show the Davie Street Presbyterian Church (Negro).<sup>18</sup>

---

<sup>18</sup> Wright et al. "East Raleigh-South Park Historic District," 7.82 describes "7-bay Neo-Gothic Revival church with irregular plan: front-facing gable on east side of facade (original pre-1922 sanctuary). Hipped-roof block between original sanctuary and tower, which is on northeast corner of building. Rear hipped-roof block faces S. Person St. New addition to southeast corner of church. Very intact; brick-veneer siding; slate roof; pointed-arch doors and stained-glass windows with hood mold and keystone; tower features round windows flanking entrances, castellations, and

**310 E. Davie Street**

VL

**314 E. Davie Street**

VL

**R.H.W. Leake House**

**316 E. Davie Street**

**C late 19th century**

Remodeled one and three-quarter-story, two-bay frame house with vinyl siding, an asphalt-shingled gable roof, a one-story wraparound porch with replacement wood posts, and modern 1/1 windows. Rev. R.H.W. Leake, presiding elder at A.M.E. church, and Dewey E. Leake resided in the house from before 1900 to 1926.<sup>19</sup>

**318 E. Davie Street**

**C ca. 1912**

One-story brick building of industrial form with a hip-roofed roof housing, modern glass-panel doors, remodeled as single-family dwelling.

**Young House**

**320 E. Davie Street**

**C ca. 1900**

One-story late Victorian frame house with an asphalt-shingled hip roof, weatherboard siding, a front porch with replacement wood posts and balusters, and replacement 2/1 windows. The house was moved from 224 S. Bloodworth Street to its present lot ca. 2006-07. Abraham Young and wife Julia, a domestic worker, resided here from before 1900 to ca. 1925.<sup>20</sup>

**322 E. Davie Street**

**C ca. 1908**

One-story frame house with weatherboard siding, an asphalt-shingled triple-A gable roof, a front porch with replacement metal supports, replacement 2/2 windows, and diamond-shaped gable vents.

**324 E. Davie Street**

VL

Brick retaining wall and two sets of concrete steps remain.

---

corbelled cornice; original sanctuary has returns, molded cornice, and frieze board. Original sanctuary first occupied by Raleigh Methodist Church, current congregation first listed at this address in 1875-76 directory. Church remodelled and enlarged by Calvin E. Lightner, prominent black Raleigh builder and businessman, who served as elder here for 62 years."

<sup>19</sup> Wright et al, "East Raleigh-South Park Historic District," 7.83.

<sup>20</sup> Wright et al, "East Raleigh-South Park Historic District," 7.83.



**330 E. Davie Street**

Stone retaining wall/foundation wall and stone steps remain.

**112 E. Lenoir Street**

**C late 19th century**

One-story, narrow Victorian frame house with vinyl siding, an asphalt-shingled triple-A gable roof, a front porch with replacement turned posts, altered round gable vents, and replacement 1/1 windows. Front yard is enclosed with a Gothic wood picket fence.

**Gorham House**

**114 E. Lenoir Street**

**C late 19th century; ca. 1930**

Two-story Victorian frame I-house with vinyl and fake stone siding, an asphalt-shingled triple-A gable roof, a one-story front porch with brick wood columns with brick supports, and 4/4 windows (floor-to-ceiling on first floor). Family of African American letter carrier Arthur L. Gorman resided here prior to 1900 to ca. 1930.<sup>21</sup>

**118 E. Lenoir Street**

VL

**206 E. Lenoir Street**

VL

**208 E. Lenoir Street**

**C-architecture Late 19th century**

Two-story frame I-house with brick-pattern asphalt siding, an asphalt-shingled gable roof, a one-story front porch with wood posts, 6/6 windows (likely original), replacement 1/1 windows, and round vents in the gables.

**212 E. Lenoir Street**

**C ca. 1880**

One-story frame house with weatherboard siding, an asphalt-shingled hip roof, a front porch with slender wood posts, a three-pane transom over the front entry, and replacement 2/2 windows under boarded transoms.

**215 E. Lenoir Street**

**C ca. 1950**

One-story, three-bay Minimal Traditional house of brick veneer frame construction with an asphalt-shingled gable roof, 6/6 windows, picture window, a round attic window, a

---

<sup>21</sup> Wright et al, "East Raleigh-South Park Historic District," 7.126.

Colonial Revival front entry surround, and an attached garage.

**216 E. Lenoir Street**

**C 1945**

Two-story, three-bay apartment building of concrete block and brick construction with a parapet shed roof, a front stoop with classical columns and a metal roof balustrade, and replacement vinyl windows.

**217 E. Lenoir Street**

**C 1909**

Two-story, three-bay Foursquare-form frame house with vinyl siding, an asphalt-shingled hip roof with a hipped dormer, a one-story partly screened wraparound porch on sided, battered posts on brick supports, and 4/1 windows.

**218 E. Lenoir Street**

**C ca. 1875**

One-story, five-bay frame duplex with weatherboard siding, a metal-sheathed hip roof, and 4/4 windows. The house is notable for its front porch with slender square posts with elaborate sawn brackets and a sawn balustrade.

**219 E. Lenoir Street**

**VL**

**222 E. Lenoir Street**

**NC 1966**

Two-story, four-bay four-unit apartment building of brick- and wood-clad frame construction with a side-gable roof. The apartments on the 600 block of S. Person are part of the complex.

**Dr. Peter H. Williams House**

**223 E. Lenoir Street**

**C late 19th century**

One-story, three-bay Queen Anne frame house with aluminum siding and an asphalt-shingled hip-and-gable roof. The front porch has turned posts, a decorative frieze, a metal balustrade, and a projecting corner with a turret roof. The house also has a decorative gable with a stained glass lunette, 2/2 windows, a non-original picture window, a trefoil vent in a rear wing gable, and a brick foundation with corbelling and honeycomb vents. African American physician Peter Williams resided here from 1914-1939.<sup>22</sup>

---

<sup>22</sup> Wright et al, "East Raleigh-South Park Historic District," 7.95.

**225 E. Lenoir Street**

VL

**309 E. Lenoir Street**

VL

Parking lot for 317 E. Lenoir Street.

**313 E. Lenoir Street**

VL

Parking lot for 317 E. Lenoir Street.

**Shaw University Early Childhood Development Center**

**317 E. Lenoir Street (also 526 E. Lenoir)**

NC ca. 2006

One-story Modernist building of stuccoed concrete block construction with varied window sizes and polychromatic paint scheme.

**409 S. Person Street**

VL

**415 S. Person Street**

VL

**417 S. Person Street**

VL

**420 S. Person Street**

VL

**422 S. Person Street**

VL

**424 S. Person Street**

C 1940s

One-story concrete block commercial building with a metal-sheathed front-gable roof with a false front and 6/6 windows.

**425 S. Person Street**

VL

**426 S. Person Street**

C 1940s

One story concrete block commercial building with flat roof and display windows.

**430 S. Person Street**

VL

**Gethsemani Seventh Day Adventist Church**

**501 S. Person Street**

**C ca. 1923**

One-story Gothic-influenced church of decorative pebble-textured and white-painted concrete block construction with an asphalt-shingled front-gable roof, a centered front tower-like projection with an entry with a lancet-arched transom, and square-headed stained glass windows. Occupied by a black congregation from 1923 to 1982.<sup>23</sup>

**507 S. Person Street**

**C pre-1914**

One-story, three-bay frame house with weatherboard siding, an asphalt-shingled hip roof with a hipped dormer with a 6/6 window, a front hipped porch with decorative pediment and replacement square wood columns, and boarded up 1/1 windows.

**508 S. Person Street**

**NC ca. 1995**

Three-story Neo-Craftsman frame apartment or condominium building. The first story has brick veneer, the second story has weatherboard siding, and the third story has wood-shingle siding.

**509 S. Person Street**

VL

**510 S. Person Street**

**NC 1948; 2010**

Recently remodeled one-story commercial building of cinderblock construction with an asphalt-shingled front-gable roof. The remodeling resulted in a fake stone front gable end, a stuccoed side elevation with fake stone accents, a front entry with double-leaf wood and decorative glass doors, and plate glass windows. In front of the building is a concrete-block double archway. The present occupant is the I Believe Multi Cultural Salon.

**513 S. Person Street**

VL

---

<sup>23</sup> Wright et al, "East Raleigh-South Park Historic District," 7.54.

**514 S. Person Street**

**C ca. 1875**

One-story, three-bay frame house with aluminum siding, an asphalt-shingled hip roof with a non-original hipped dormer, a front porch with brick foundation and replacement red tile floor and replacement metal supports, and on-original 6/6 windows.

**516 S. Person Street**

**VL**

**517 S. Person Street**

**VL**

**520 S. Person Street**

**VL**

**521 S. Person Street**

**C early 20th century; ca. 1949**

Two-story, three-bay Foursquare-form house with weatherboard or HardiePlank siding, an asphalt-shingled hip roof with a hipped dormer, a one-story front porch with replacement square wood posts, and replacement 6/6 windows. The house may have been moved to its site after 1949. The present occupant is the Shaw University Football Office.

**525 S. Person Street**

**C ca. 1905**

One-story, three-bay frame house with vinyl siding, an asphalt-shingled gable roof, a front stoop with metal awning (original porch was removed), horizontal 2/2 windows, and a non-original picture window.

**527 S. Person Street**

**VL**

**610 S. Person Street**

**NC ca. 1966**

Two-story apartment building of brick- and wood-clad frame construction with a side-gable roof. The apartments at 222-228 E. Lenoir are part of the complex.

**600 block S. Person Street**

**NC ca. 1966**

Two-story apartment building of brick-veneered frame construction with a side-gable roof. The apartments at 222-228 E. Lenoir are part of the complex.

**210 Regan Lane (formerly Toppers Lane)**

VL

Parking lot.

**212 Regan Lane (formerly Toppers Lane)**

VL

Parking lot.

**214 Regan Lane (formerly Toppers Lane)**

VL

Parking lot.

**216 Regan Lane (formerly Toppers Lane)**

VL

Parking lot.

**218 Regan Lane (formerly Toppers Lane)**

VL

Parking lot.

**McDonald's Restaurant**

**101 and 111 E. South Street**

**NC late 20<sup>th</sup> century**

One-story frame and brick-veneer building with the chain's characteristic deeply overhanging hip roof, rib-like roof features, plate glass doors and windows, and a drive through.

**117 E. South Street**

VL

**Charles Frazier House**

**121 E. South Street**

**C 1925**

Story-and-a-half frame house with Craftsman and Colonial Revival influences. The house has an asphalt-shingled gambrel roof with a shed dormer across the front with a center gable, and a front porch with Craftsman brick and wood supports. Windows have decorative Craftsman sashes and the front entry has decorative Craftsman sidelights, transom, and door. The house was rehabilitated and a new foundation inserted in 2002. A black metal fence encloses this and the adjacent property, 125 E. South Street. Owned by C.R. Frazier, an African American cashier for the Mechanics &

Farmers Bank and secretary-treasurer of the Capital Building & Loan Association.<sup>24</sup>

**Rogers-Bagley-Daniels-Pegues House (RHL)**

**125 E. South Street**

**C ca. 1855**

One of the few surviving antebellum houses in the city, this two-story Greek Revival-Italianate frame house has weatherboard siding, a metal-sheathed hip roof, a bracketed cornice, corner pilasters, side bay windows, 6/6 windows, and rear wings. The one-story front porch has classical columns, a ca. 1906 enclosure, flush board sheathing on the house wall behind, and a deck extension with a decorative sawn balustrade. The house, which is listed individually in the National Register in 1979, and designated a Raleigh Historic Landmark in 2009, was rehabilitated in 2002. A black metal fence encloses this and the adjacent property, 121 E. South Street.

**205 E. South Street**

**VL**

**207 E. South Street**

**NC late 19th century**

One-story, frame shotgun-form house with modern beaded weatherboard siding, an asphalt-shingled gable roof with the gable facing the street, a shed wing, and mostly replacement windows.

**211 E. South Street**

**C late 19th century**

One-story, two-bay Victorian frame house with an asphalt-shingled front-gable roof, asbestos-shingle siding, replacement windows, and a quatrefoil gable vent. The front porch has modern Craftsman wood posts on parged pedestals that are modeled on early-twentieth-century supports that survived on the house wall.

**213 E. South Street**

**C late 19th century**

One-story, two-bay frame house with vinyl siding, an asphalt-shingled gable roof, a front porch with replacement roof, metal supports on brick pedestals, and a metal balustrade, 6/6 windows, and a picture window. Cornice returns and water table remain.

**217 E. South Street**

**C late 19th century**

One-story, three-bay Victorian shotgun-form frame house with asbestos shingle siding,

---

<sup>24</sup> Wright et al, "East Raleigh-South Park Historic District," 7.100.

an asphalt-shingled front-gable roof with a diamond-shaped vent, a front porch with wood posts and slatted balusters, and 1/1, 4/4, and 6/6 windows.

**219 E. South Street**

**C late 19th century**

One-story frame house with weatherboard siding, an asphalt-shingled hip roof, the brick foundation of a porch with wood lattice railing, and 6/6 and 9/9 windows.

**225 E. South Street**

**C pre-1914**

Two-story, three-bay frame house with weatherboard siding, an asphalt-shingled hip roof with open soffit and a hipped dormer, a one-story entry porch with square wood columns and metal balustrade, and 4/4 and replacement 1/1 windows.

**105 Stronach's Alley**

**C-archaeology**

Adjacent to Stronach's Alley and the Dr. M.T. Pope House, this property has potential as an archaeological site. As many as thirteen dwellings fronted the alley [1909, 1914 Sanborn maps]. To the rear of this property, fronting E. Cabarrus Street, was a dwelling [1896, 1903, 1909, 1914 Sanborn maps].

**106 Stronach's Alley**

**C-archaeology**

Adjacent to Stronach's Alley, this property has potential as an archaeological site. As many as thirteen dwellings fronted the alley [1909, 1914 Sanborn maps].

**107 Stronach's Alley**

**C-archaeology**

Adjacent to Stronach's Alley, this property has potential as an archaeological site. As many as thirteen dwellings fronted the alley [1909, 1914 Sanborn maps].

**108 Stronach's Alley**

**C-archaeology**

Adjacent to Stronach's Alley, this property has potential as an archaeological site. As many as thirteen dwellings fronted the alley [1909, 1914 Sanborn maps]. At the rear of this property stood a Woodworking shop [1914-1950 Sanborn maps].

**111 Stronach's Alley**

**C-archaeology**

Adjacent to Stronach's Alley, this property has potential as an archaeological site. As many as thirteen dwellings fronted the alley [1909, 1914 Sanborn maps].



### **112 Stronach's Alley**

#### **C-archaeology**

Adjacent to Stronach's Alley, this property has potential as an archaeological site. As many as thirteen dwellings fronted the alley [1909, 1914 Sanborn maps].

### **114 Stronach's Alley**

#### **C-archaeology**

Adjacent to Stronach's Alley, this property has potential as an archaeological site. As many as thirteen dwellings fronted the alley [1909, 1914 Sanborn maps].

### **116 Stronach's Alley**

#### **C-archaeology**

Adjacent to Stronach's Alley, this property has potential as an archaeological site. As many as thirteen dwellings fronted the alley [1909, 1914 Sanborn maps].

### **Dr. M. T. Pope House (RHL)**

#### **511 S. Wilmington Street**

##### **C 1900; ca. 1920; ca. 1940**

Two-story brick house with an asphalt-shingled front-gable roof, a two-tier front porch added ca. 1920 with a weatherboard-enclosed "sun parlor" in the upper tier, 2/2 and 6/6 windows, one-story rear additions (one from ca. 1940), and a round stained glass window. The house is individually listed in the National Register.

### **513 S. Wilmington Street**

#### **C-archaeology**

Adjacent to Stronach's Alley, this property has potential as an archaeological site. As of 1896 the lots adjoining the east side of S. Wilmington between Stronach's Alley and E. Lenoir Street contained a series of five dwellings [1896, 1903, 1909, 1914 Sanborn maps]. The McCauley Private Hospital (Colored) stood at this site in the early twentieth century [1914-1950 Sanborn maps].

### **519 S. Wilmington Street**

#### **C-archaeology**

Adjacent to Stronach's Alley, this property has potential as an archaeological site. As of 1896 the lots adjoining the east side of S. Wilmington between Stronach's Alley and E. Lenoir Street contained a series of five dwellings [1896, 1903, 1909, 1914 Sanborn maps]. A Wholesale Auto Parts stood on this property [1914-1950 Sanborn maps].

### **521 S. Wilmington Street**

#### **C-archaeology**

Adjacent to Stronach's Alley, this property has potential as an archaeological site. As of 1896 the lots adjoining the east side of S. Wilmington between Stronach's Alley and E.

Lenoir Street contained a series of five dwellings [1896, 1903, 1909, 1914 Sanborn maps]. An alley adjacent to the south lot line of this property accessed up to four interior lots with dwellings (later recombined with this property) [1896, 1909, 1914 Sanborn maps].

### **529 S. Wilmington Street**

#### **C-archaeology**

Adjacent to Stronach's Alley, this property has potential as an archaeological site. As of 1896 the lots adjoining the east side of S. Wilmington between Stronach's Alley and E. Lenoir Street contained a series of five dwellings [1896, 1903, 1909, 1914 Sanborn maps]; three Cotton Ware Houses, fronting E. Lenoir Street, and a Cotton Platform stood at this site [1914 Sanborn maps]; the Cotton Ware Houses became the Parker Bonded Ware Houses, with a Tin Shop and Motor Freight Station to the east (fronting Lenoir) and Ware House, Auto Repair shop, and Filling Station at the northwest corner of E. Lenoir and S. Blount Street [1914-1950 Sanborn maps].

### **General Baptist State Convention of North Carolina Building**

#### **603 S. Wilmington Street**

#### **C 1953**

One-story Modern Movement brick building with a flat roof, projecting and recessed entries with stack-bond surrounds, and aluminum-framed windows in projecting concrete frames.

## *Bibliography*

"500 Block S. Person/S. Blount Street Redevelopment Plan." Report, 2000.

*Branson's North Carolina Agricultural Almanack . . . 1891*. Raleigh: Levi Branson, 1891.

Brown, Charlotte Vestal, and William Bushong. "Masonic Temple Building." National Register of Historic Places Inventory-Nomination Form, 1983.

*Directory of the City of Raleigh, North Carolina, 1887*. Raleigh: Edwards, Broughton and Company, 1887.

Johnson, K. Todd, and Elizabeth Reid Murray. *Wake, Capital County of North Carolina*. Volume 2. Raleigh: Wake County, 2008.

Little, M. Ruth. "College Park/Idlewild Mini-district Phase I Survey." Report, 1998.

Mattson, Richard. "The Evolution of Raleigh's African-American Neighborhoods in the 19<sup>th</sup> and 20<sup>th</sup> Centuries." Report, 1988.

Parham, David W. "Rogers-Bagley-Daniels-Pegues House." National Register of Historic Places Inventory-Nomination Form, 1979.

*Raleigh, North Carolina*. 1872 aerial perspective map.

Sanborn Map Company. Maps of Raleigh, N.C., for 1884, 1888, 1896, 1903, 1909, 1914, 1914-1950.

Simmons-Henry, Linda, and Linda Harris Edmisten. *Culture Town: Life in Raleigh's African American Communities*. Raleigh: Raleigh Historic Districts Commission, Inc., 1993.

Smith, Gordon. Conversation with Dan Pezzoni, March 11, 2010.

Stronach, Alexander. "The Geranium Valley Stronachs." Typescript (1956) on file at Olivia Raney Library, Raleigh.

Swallow, Ann V. Email to Dan Pezzoni, February 17, 2010.

Wright, Elliott K., et al. "East Raleigh-South Park Historic District." National Register of

Historic Places Registration Form, 1990.

Zogry, Kenneth Joel. "Dr. M. T. Pope House." National Register of Historic Places  
Registration Form, 1999.