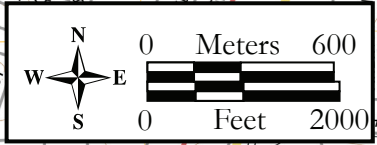
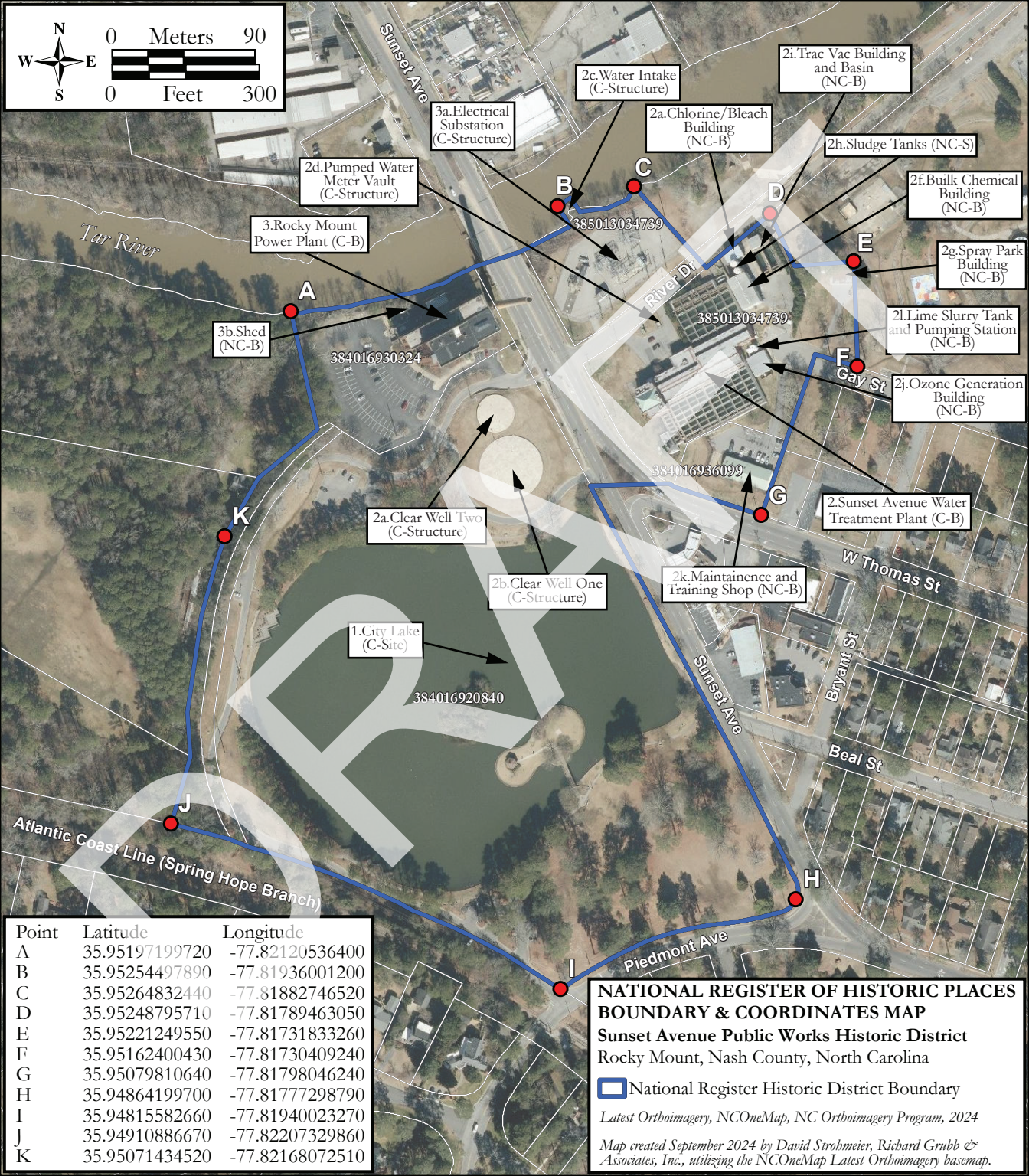
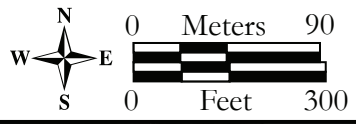


Sunset Avenue Public Works Historic District

**NATIONAL REGISTER OF HISTORIC PLACES  
LOCATION MAP**  
**Sunset Avenue Public Works Historic District**  
Rocky Mount, Nash County, North Carolina  
USGS Topographic Map (2022): Rocky Mount, NC  
Map created September 2024 by David Strohmeier, Richard Grubb & Associates, Inc., utilizing the USGS Topographic basemap.





3b. Shed (NC-B)

2d. Pumped Water Meter Vault (C-Structure)

3. Rocky Mount Power Plant (C-B)

3a. Electrical Substation (C-Structure)

2c. Water Intake (C-Structure)

2a. Chlorine/Bleach Building (NC-B)

2i. Trac Vac Building and Basin (NC-B)

2h. Sludge Tanks (NC-S)

2f. Bulk Chemical Building (NC-B)

2g. Spray Park Building (NC-B)

2l. Lime Slurry Tank and Pumping Station (NC-B)

2j. Ozone Generation Building (NC-B)

2. Sunset Avenue Water Treatment Plant (C-B)

2k. Maintenance and Training Shop (NC-B)

2a. Clear Well Two (C-Structure)

2b. Clear Well One (C-Structure)

1. City Lake (C-Site)

Atlantic Coast Line (Spring Hope Branch)

Point	Latitude	Longitude
A	35.95197199720	-77.82120536400
B	35.95254497890	-77.81936001200
C	35.95264832440	-77.81882746520
D	35.95248795710	-77.81789463050
E	35.95221249550	-77.81731833260
F	35.95162400430	-77.81730409240
G	35.95079810640	-77.81798046240
H	35.94864199700	-77.81777298790
I	35.94815582660	-77.81940023270
J	35.94910886670	-77.82207329860
K	35.95071434520	-77.82168072510

**NATIONAL REGISTER OF HISTORIC PLACES  
BOUNDARY & COORDINATES MAP**

**Sunset Avenue Public Works Historic District**  
Rocky Mount, Nash County, North Carolina

National Register Historic District Boundary

Latest Orthoimagery, NCOneMap, NC Orthoimagery Program, 2024

Map created September 2024 by David Strohmeier, Richard Grubb & Associates, Inc., utilizing the NCOneMap Latest Orthoimagery basemap.



Tar River

Sunset Ave

River Dr

Gay St

W Thomas St

Bryant St

Beal St

Piedmont Ave

Atlantic Coast Line (Spring Hope Branch)

384016930324


385013034739


385013034739

384016936099

384016920840

**NATIONAL REGISTER OF HISTORIC PLACES**  
**PHOTO KEY**  
**Sunset Avenue Public Works Historic District**  
Rocky Mount, Nash County, North Carolina

 National Register Historic District Boundary

 Photo Location and Direction

*Latest Orthoimagery, NCOneMap, NC Orthoimagery Program, 2024*

*Map created September 2024 by David Strohmeier, Richard Grubb & Associates, Inc., utilizing the NCOneMap Latest Orthoimagery basemap.*