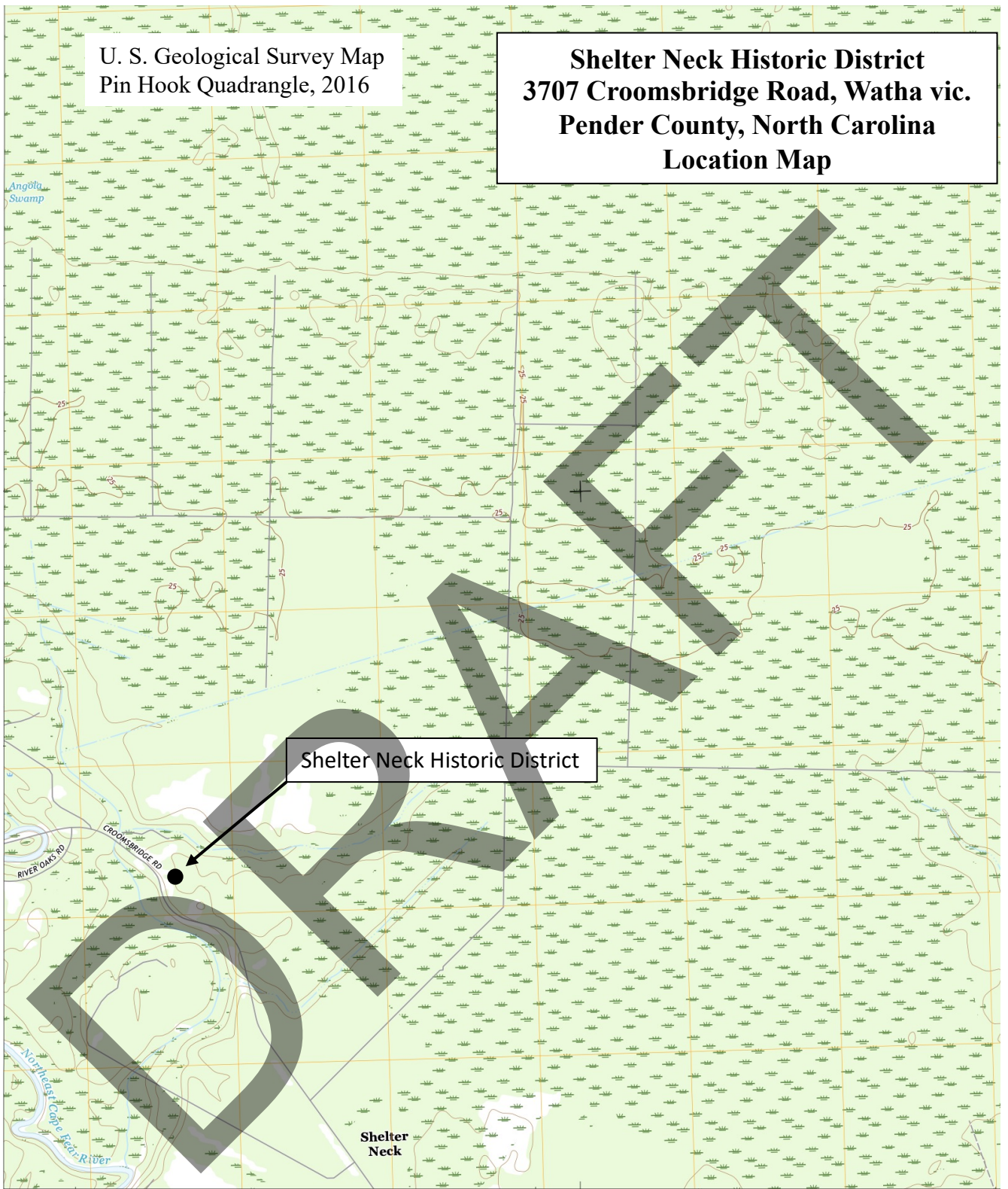
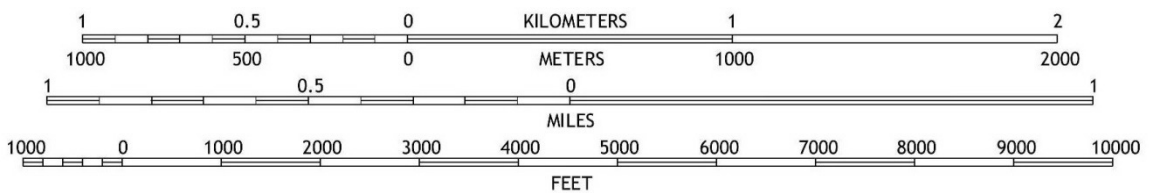


U. S. Geological Survey Map
Pin Hook Quadrangle, 2016

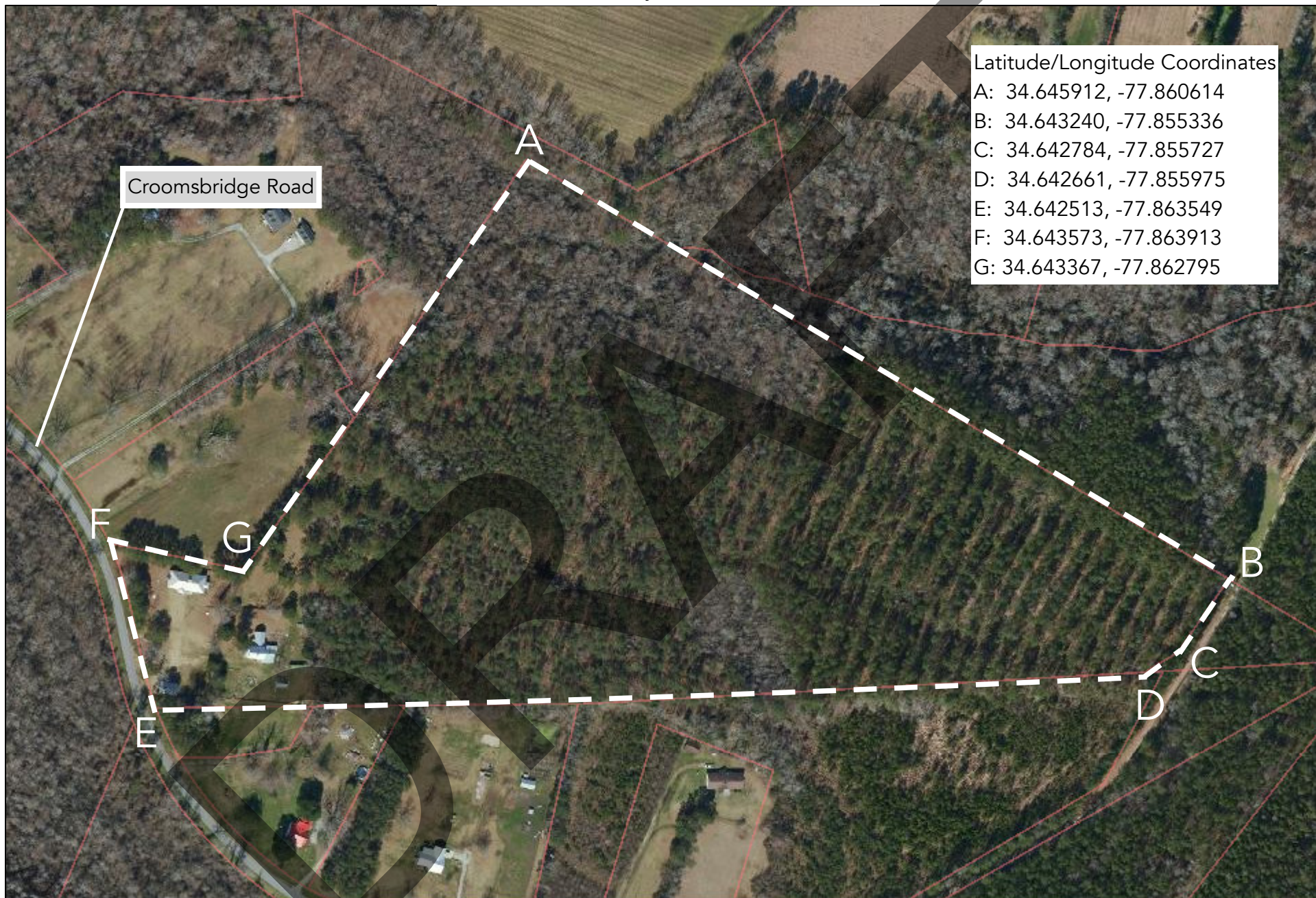
Shelter Neck Historic District
3707 Croomsbridge Road, Watha vic.
Pender County, North Carolina
Location Map



SCALE 1:24 000



Shelter Neck Historic District
3707 Croomsbridge Road, Watha vic.
Pender County, North Carolina

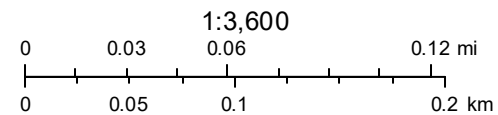


National Register Boundary Map

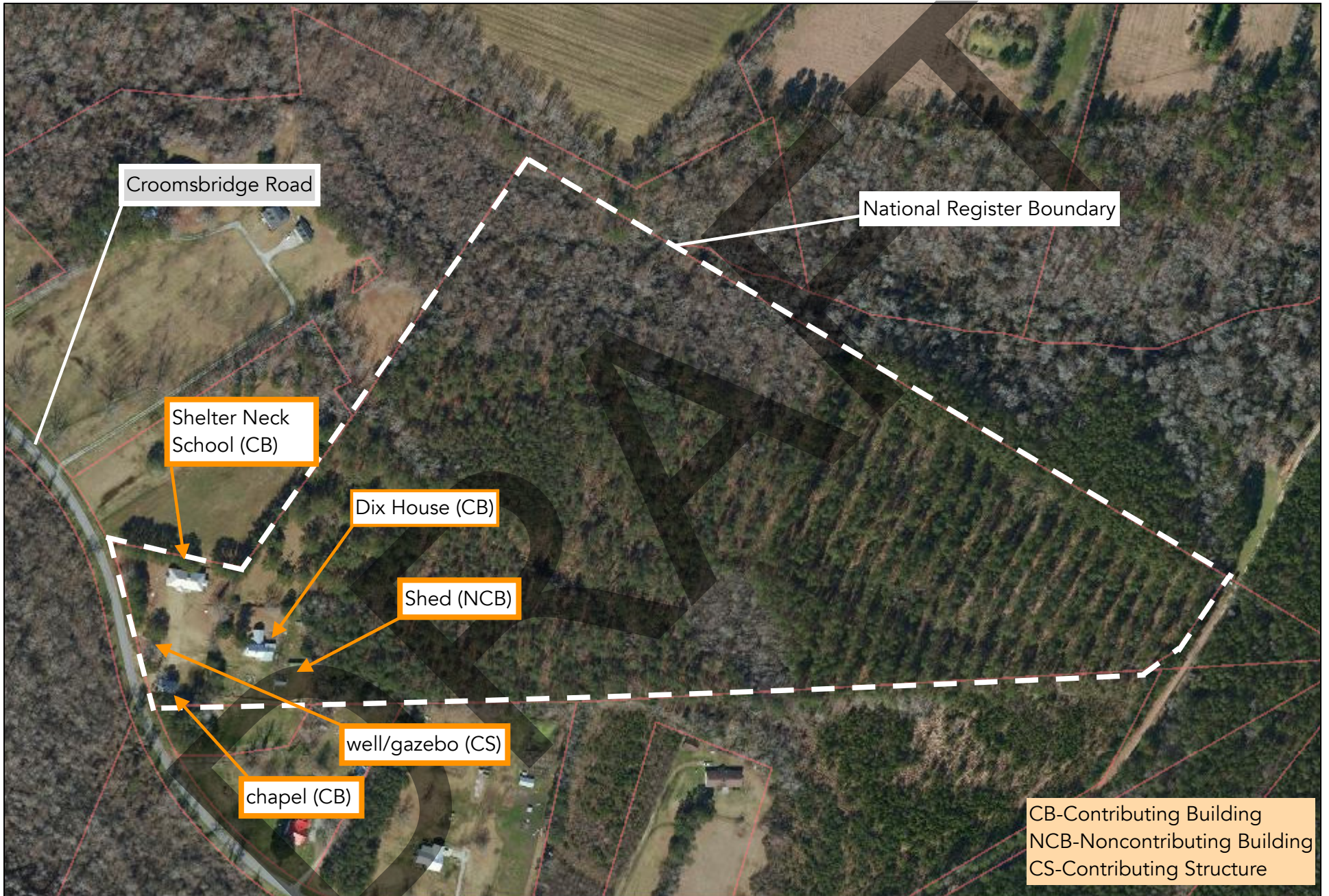
Base map: Pender County GIS, imagery date unknown

Map created by Jennifer Martin, MDM Historical Consultants, July 2024

North ↑



Shelter Neck Historic District
3707 Croombsbridge Road, Watha vic., Pender County, North Carolina

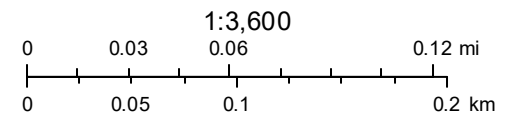


National Register Boundary Map

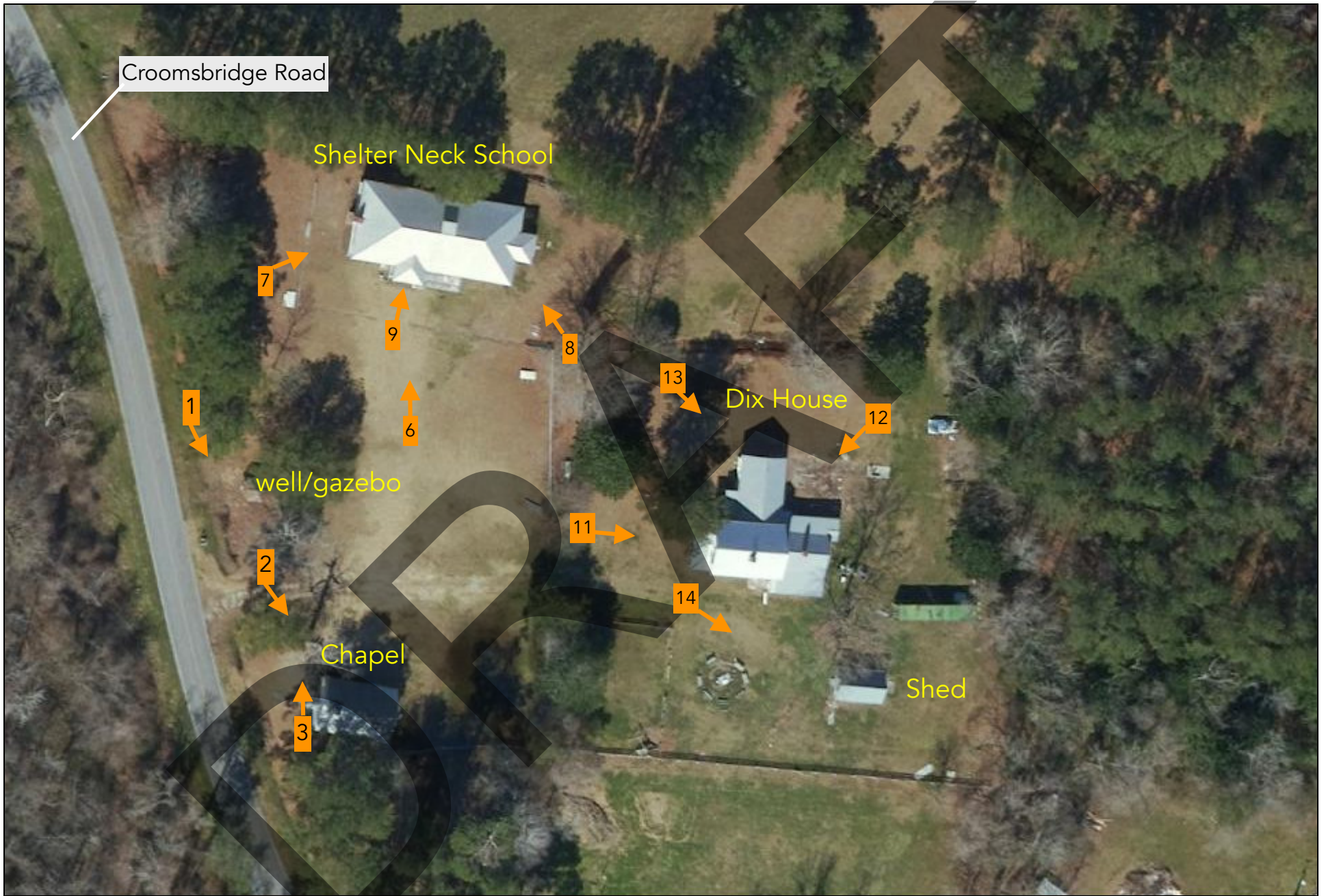
Base map: Pender County GIS, imagery date unknown

Map created by Jennifer Martin, MDM Historical Consultants, July 2024

North ↑



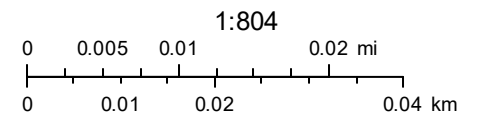
Shelter Neck Historic District
3707 Croombsbridge Road, Watha vic., Pender County, North Carolina



PHOTOGRAPH KEY

photo number
and direction of view (exteriors)
3 →

North ↑



Base map: Pender County GIS, imagery date unknown
Map created by Jennifer Martin, MdM Historical Consultants,
July 2024