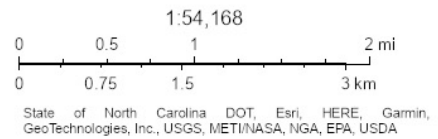
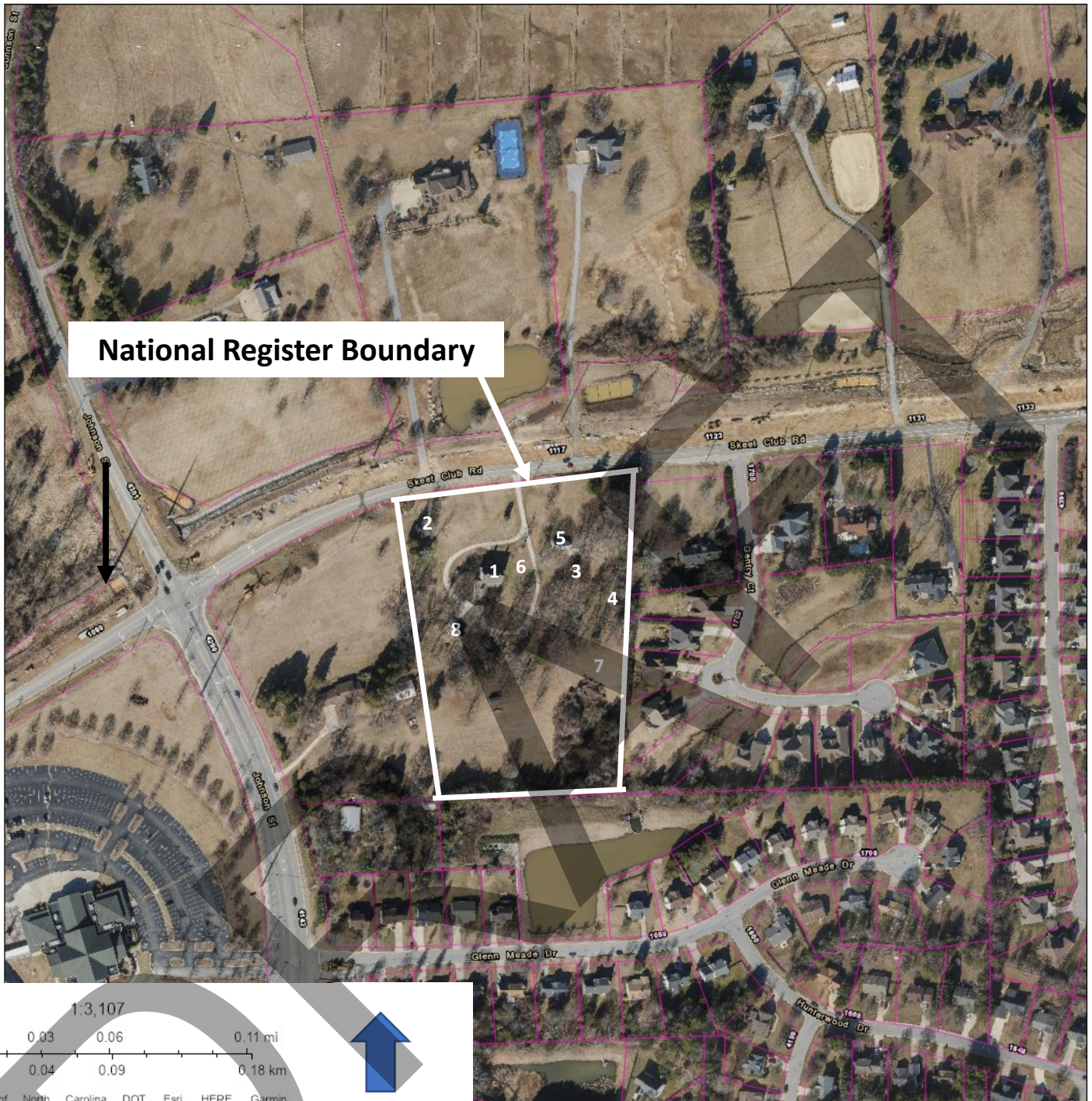


Elihu and Abigail
Mendenhall House
Lat: 36.036941
Long: -80.017372

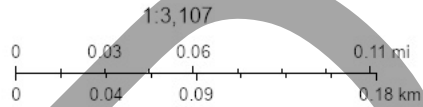
Elihu and Abigail Mendenhall House
1106 Skeet Club Road
High Point, Guilford County
North Carolina
National Register Location Map



Source: NC HPO, HPOWEB
Created by Samantha Smith 08-23-2022



National Register Boundary



N

State of North Carolina DOT, Esri, HERE, Garmin, GeoTechnologies, Inc., USGS, EPA, USDA, Esri, HERE, Garmin, (c) OpenStreetMap contributors, NC Center for Geographic Information and Analysis (NCCGIA), NC County Governments, US EPA, NC OneMap, NC Center for Geographic Information and

Elihu and Abigail Mendenhall House
 1106 Skeet Club Road
 High Point, Guilford County
 North Carolina
National Register Boundary Map

Boundary encompasses tax parcel number 53000000370000 indicated by the thick white line.

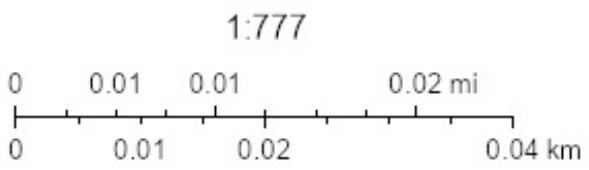
- Resources**
1. Elihu and Abigail Mendenhall House, c. 1855, contributing building
 2. Spring House Foundation, early 19th century, contributing site
 3. Grain Silo, c. 1952, contributing building
 4. Stable, c. 2000, noncontributing
 5. Processing House, c. 1945, contributing building
 6. General Store, c. 1845, archaeological site, contributing site
 7. Roadbed, 19th century, contributing site
 8. Garage, c. 2020, noncontributing building

**ELIHU AND ABIGAIL MENDENHALL HOUSE | 1106 Skeet Club Road
High Point, Guilford County, North Carolina 27265**



Resources

- A) Elihu and Abigail Mendenhall House, c. 1855, contributing building
- B) Spring House Foundation, early 19th century, contributing site
- C) Grain Silo, c. 1952, contributing building
- D) Stable, c. 2000, noncontributing
- E) Processing House, c. 1945, contributing building
- F) General Store, c. 1845, archaeological site, contributing site
- G) Roadbed, 19th century, contributing site
- H) Garage, c. 2020, noncontributing building



 **Photographic Key**
 **Parcel Boundaries**



**ELIHU AND ABIGAIL MENDENHALL HOUSE | 1106 Skeet Club Road
High Point, Guilford County, North Carolina 27265**

 **Photographic Key**

