



**North Carolina Department of Natural and Cultural Resources
State Historic Preservation Office**

Ramona M. Bartos, Administrator

Governor Roy Cooper
Secretary D. Reid Wilson

Office of Archives and History
Deputy Secretary Darin J. Waters, Ph.D.

MEMORANDUM

TO: Joy Beasley, Keeper
National Register Program, NPS

FROM:

A handwritten signature in blue ink, appearing to read "Darin J. Waters".

Darin J. Waters, Ph.D., State Historic Preservation Officer

DATE: December 13, 2023

RE: Post-Move Documentation for the Menagerie Carousel, Burlington, Alamance County, North Carolina. (NR-Listed 8.30.1982, NR Ref# 82003420)

Approval of post-move documentation of the Menagerie Carousel (NR, 1982) is being sought pursuant to 36 CFR 60.14(b) for the carousel to remain listed in the National Register in its new location.

On November 13, 2020, our office requested approval of the proposed new location for the Menagerie Carousel and for the carousel to remain listed in the National Register of Historic Places during and immediately after the move. On December 21, 2020, the National Park Service approved the request. The carousel was relocated to the approved adjoining parcel as of December 22, 2022, in order to protect the important historic resource from potential damage; the carousel had been originally located in a 100-year and 500-year designated flood plain.

I affirm that in its new location, as detailed in the accompanying Additional Documentation submission, it appears the Menagerie Carousel retains the requisite historic integrity to convey its local significance under *Criterion A* in the area of Entertainment/Recreation as well as under *Criterion C* in the area of Art. The North Carolina State Historic Preservation Office appreciates your consideration of this post-move documentation of the National Register-listed Menagerie Carousel to ensure it remains listed in its new location.

United States Department of the Interior
National Park Service

National Register of Historic Places
Continuation Sheet

Menagerie Carousel
Name of Property
Alamance County, North Carolina
County and State
82003420
NR Reference Number

This Additional Documentation submission updates the original National Register of Historic Places (NRHP) nomination for the Menagerie Carousel in Burlington, Alamance County, North Carolina. Also known locally as the Burlington Carousel, it was listed in the NRHP on 8.30.1982 (NR Reference # 82003420). The Carousel was moved in late 2022 and has remained listed in the National Register of Historic Places after receiving approval for the proposed Request to Relocate. The structure has been relocated to its new location following a methodical and sensitive restoration of the carousel's mechanical equipment and figures. A newly constructed carousel house pays homage to the original in its overall configuration and includes features that allow for greater visibility of the structure as well as greater protection from the elements. In addition, a west-facing projection provides an interior event space.

Due to changes made to NPS form 10-900 since 1982, some information, albeit not new information, is being presented for the first time in this submission.

State/Federal Agency Certification

As the designated authority under the National Historic Preservation Act, as amended,

I hereby certify that this additional documentation move removal
 name change (additional documentation) other

meets the documentation standards for registering properties in the National Register of Historic Places and meets the procedural and professional requirements set forth in 36 CFR Part 60.



11/13/23

Signature of Certifying Official/Title: State Historic Preservation Officer, NC HPO

Date of Action

National Park Service Certification

I hereby certify that this property is:

- entered in the National Register
- determined eligible for the National Register
- determined not eligible for the National Register
- removed from the National Register
- additional documentation accepted
- other (explain:)

Signature of the Keeper

Date of Action

United States Department of the Interior
National Park Service

National Register of Historic Places
Continuation Sheet

Menagerie Carousel
Name of Property
Alamance County, North Carolina
County and State
82003420
NR Reference Number

Section 2. Location

Street & number: 1368 S Main St.
 City or town: Burlington State: NC County: Alamance
 Not For Publication: Vicinity

Section 5. Classification

Ownership of Property
(Check as many boxes as apply.)

- Private _____
- Public – Local X
- Public – State _____
- Public – Federal _____

Category of Property
(Check only **one** box.)

- Building(s) _____
- District _____
- Site _____
- Structure X
- Object _____

Number of Resources within Property
(Do not include previously listed resources in the count)

Contributing	Noncontributing	
<u> 0 </u>	<u> 1 </u>	buildings
<u> 0 </u>	<u> 0 </u>	sites
<u> 0 </u>	<u> 0 </u>	structures

United States Department of the Interior
National Park Service

National Register of Historic Places
Continuation Sheet

Menagerie Carousel
----- Name of Property
Alamance County, North Carolina
----- County and State
82003420
----- NR Reference Number

<u>0</u>	<u>0</u>	objects
<u>0</u>	<u>1</u>	Total

Number of contributing resources previously listed in the National Register 1

7. Description

Manufactured in 1913 by the Dentzel Company of Germantown, Pennsylvania, the merry-go-round retains all of its original animals. There are forty-six animals, which include one lion, one tiger, one giraffe, one reindeer, four pigs, four rabbits, four ostriches, four cats, and twenty-six horses (see representational photos in the Photos Section). Along with two chariots, the animals are mounted three abreast on a rotating wooden platform with a radius of 20'4.5" and a circumference of 127'4". The outer figures are stationary; those on the two inner rows are "jumpers."

Subsequent to a \$1.2 million dollar mechanical and artistic restoration by skilled master craftsmen at Carousel & Carvings Inc. of Marion, Ohio, the carousel was reassembled faithful to its original design, thereby preserving its historic character-defining features. This same company has been entrusted by historic carousel owners across the country including the Pullen Park Dentzel Carousel located in Raleigh, Philadelphia's Woodside Park Dentzel Carousel at the Please Touch Museum, and the Grand Dentzel Carousel at the Children's Museum of Memphis. The Pullen Park Carousel and Grand Carousel are also listed in the National Register.

The upper section of the inner cornice of the carousel is composed of carved frames surrounding wooden panels; the lower section contains oval carved frames around mirrors. The outer rim is ornamented by alternating painted wooden ovals and framed mirrors. The original oil paintings in a western motif have been restored.

The carousel is driven by its original mechanism located in the center of the platform. It consists of a ten-horsepower, 220-volt, three-phase motor rated at 1120 R.P.M. The motor has a 1 1/2 inch diameter horizontal shaft with a flat twelve-inch leather covered pulley at the end, and is mounted on a concrete pillar with adjusting track on base for adjusting belt tension. The mechanism is driven from the motor by a fiber belt eight feet in length to a flat five-spoke wooden pulley six inches wide by thirty inches on diameter, mounted on a five-foot horizontal shaft and supported by pillar block bearings. In the middle of the shaft is a cork-filled, pressure clutch operated manually by a three-foot level. Beyond the clutch is a twelve-inch crown gear which meshes with a thirty-inch crown gear on the bottom of a two-inch vertical shaft. This shaft extends six feet and has another twelve-inch gear on top which meshes with a gear track forty-eight feet in diameter which encompasses the inner super-structure of the carousel.

Representative photos show a sample of the restored animals as well as the panels and mechanical equipment. Figure 1 provides a graphic that shows the placement of all of the animals and chariots within the three rows on the carousel floor.

United States Department of the Interior
National Park Service

National Register of Historic Places
Continuation Sheet

Menagerie Carousel
Name of Property
Alamance County, North Carolina
County and State
82003420
NR Reference Number

The new carousel house is similar in design and scale to the original carousel house. The eight-paneled roof of the new house is made of standing-seam metal and, much like the original house, features a belvedere atop the main roof. While the original was weatherboard clad vents, glass panes Stone-veneer full-height piers support the roof system. Large plate-glass movable door panels surmounted by five-panel glass transoms allow for greater visibility of the carousel much like the open-air original carousel house. However, the new building’s glass encasement will showcase the carousel even when it is not open to the public. The semi-climate-controlled space will allow for year-round enjoyment of the Carousel. Doors surrounding the carousel will pivot open to retain the whimsy of the carousel ride and organ music throughout the park. An adjoining event space on the west side of the carousel house can accommodate 100 plus individuals.

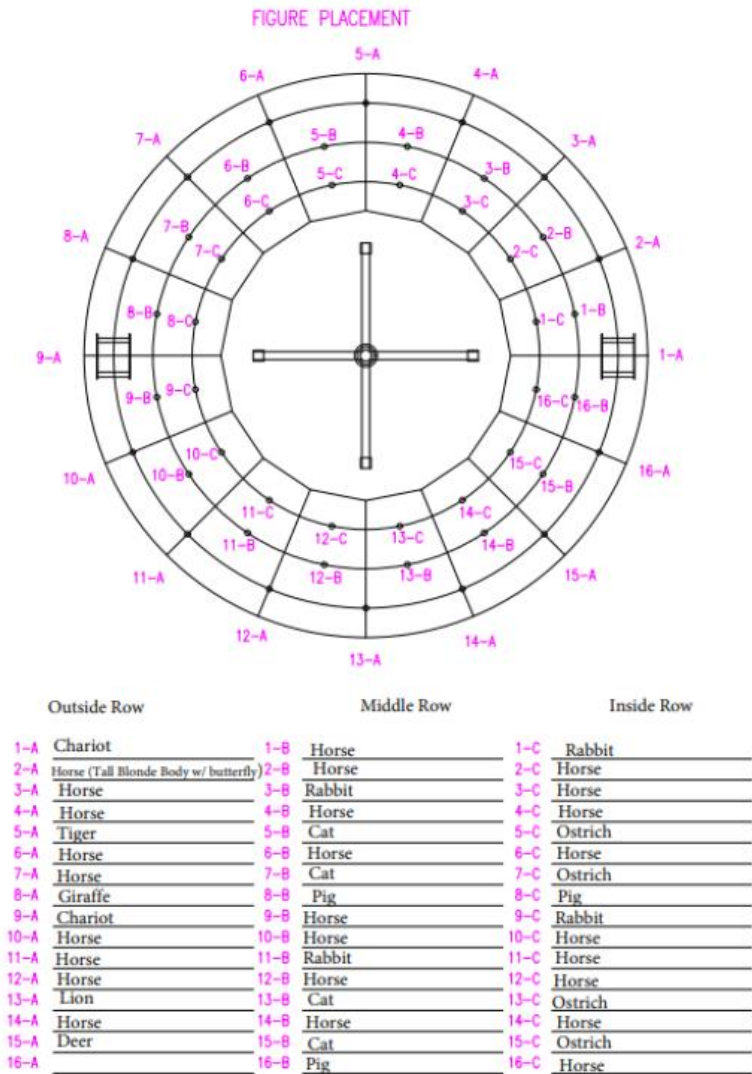


Figure 1 : Carousel figural placement by row

United States Department of the Interior
National Park Service

National Register of Historic Places
Continuation Sheet

Menagerie Carousel

Name of Property
Alamance County, North Carolina

County and State
82003420

NR Reference Number

Original Site – Burlington City Park

The Dentzel Carousel is currently located in the City of Burlington City Park surrounded by roughly sixty-four acres of land used for Recreation and Parks purposes. The site is roughly a mile from downtown Burlington. Two major roads, Highway 70 and Highway 87, intersect to the North and Interstate 40 is located to the Southeast. The carousel was originally located within a covered frame shelter surrounded by a parking lot on one side and play areas on the other three sides. The carousel faced South Main Street and South Church Street while mature deciduous trees towered over new vegetation in the surrounding park landscape.

Development from the 1950s through the early twenty-first century surrounded the original carousel site. A 1950s residential neighborhood sprung up to the west and south. Alamance County YMCA opened its doors to a new recreation facility adjacent to the carousel in 1955. Although the nature of the setting - family recreation - has remained consistent, City Park continued to expand with the addition of rides and park equipment. The carousel house itself remained unchanged since 1948.

Preservationists have long been concerned about flood threats to the carousel. The original site was within the 100-year floodplain and was susceptible to flooding during heavy rain events. Flooding and water damage posed a great hazard to the operation and preservation of the carousel and its house.

New Location – Burlington City Park

Moving the carousel to a location outside of floodplain yet still within the City Park Amusement Area seemed to be the ideal solution albeit a compromise to the resource's integrity of location. The new location of the carousel is roughly three-hundred feet to the west, moving it outside of both the 100-year and 500-year floodplain. The new location allows the carousel to remain close to other amusement rides and play areas within City Park. The new location was deemed ideal as it is the highest land in the area, adjacent to park property, visible from Highway 70 and South Main Street, and was made handicap accessible, and designed to be the focal point of the amusement area.

The new superstructure was designed specifically to highlight this historic piece of interactive art and entertainment. Its design incorporates a new house for the carousel with a new event space to house various community events. The new location and building also presented the City of Burlington with an opportunity to expand on its recreation and parks programming. The City is planning for the future of the Amusement Area around the new placement of the historic Dentzel Carousel. A master plan for the amusement area is in development. Proposals include an all-inclusive play area and an event lawn which will surround the new carousel house. In its new location, the carousel connects to its original location on an axis. This will provide the opportunity to educate the community about the history of the Carousel along the walk.

United States Department of the Interior
National Park Service

National Register of Historic Places
Continuation Sheet

Menagerie Carousel
Name of Property
Alamance County, North Carolina
County and State
82003420
NR Reference Number

Statement of Integrity

The relocation of an historic property to a new site compromises its integrity of location; however, as seen with the Menagerie Carousel in Burlington, the relocation does not automatically compromise its integrity of setting, feeling, and association. The carousel was not moved a significant distance from its original location, and it remains in the same setting of a bucolic suburban park. The carousel retains integrity of feeling because it retains its ability to evoke feelings of a simpler, less-complicated time in our nation’s history. And, like setting and feeling, the integrity of association also remains high because of the retention of the carousel’s character-defining features and the ability to convey its historic character. The master craftsmen Carousel & Carvings Inc. employed their skills in the execution of a fully realized restoration of the carousel’s design aesthetic and mechanical systems. As a result, the carousel’s integrity of design, workmanship, and materials remain high.

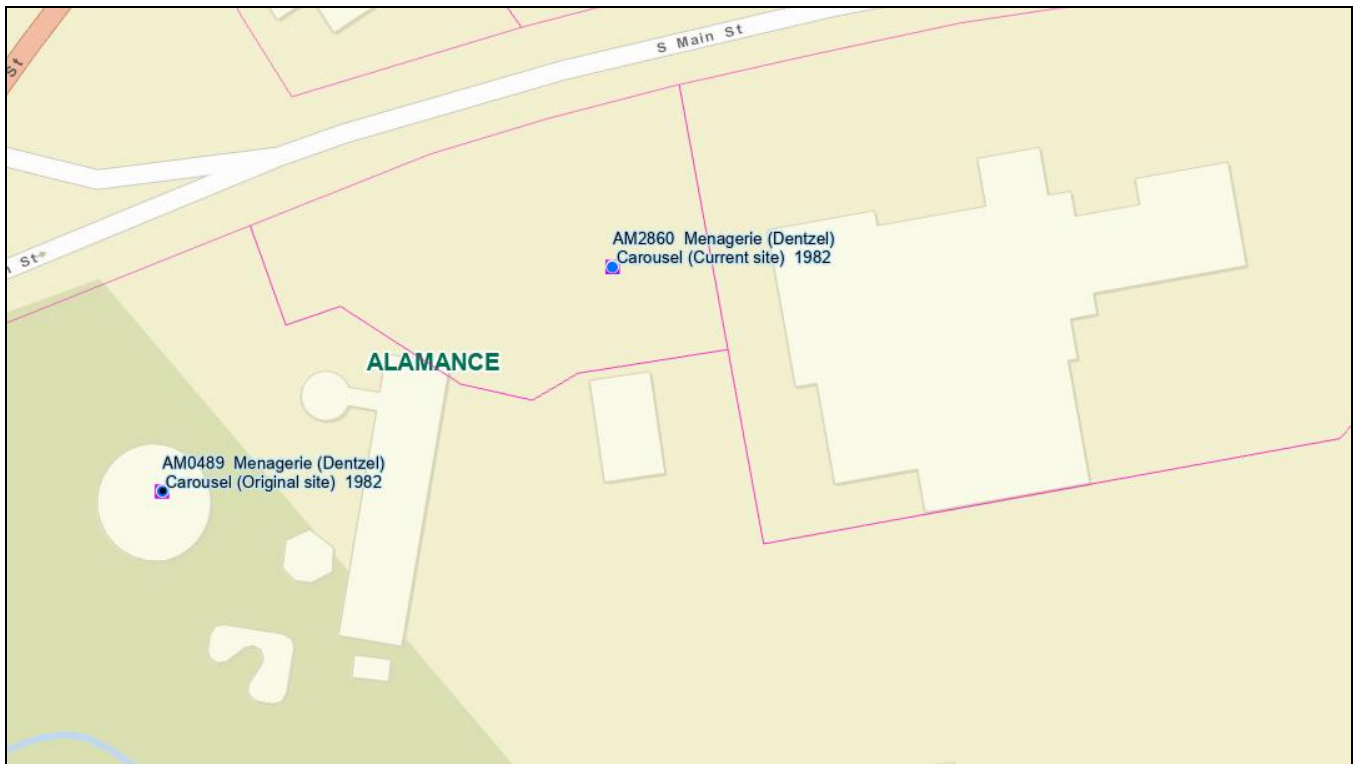


Figure 2: Menagerie Carousel - original and current locations (ESRI/Alamance County data layer)

United States Department of the Interior
National Park Service

National Register of Historic Places
Continuation Sheet

Menagerie Carousel
Name of Property
Alamance County, North Carolina
County and State
82003420
NR Reference Number



Figure 3: Menagerie Carousel - original and current locations (ESRI/Alamance County aerial layer)

United States Department of the Interior
National Park Service

**National Register of Historic Places
Continuation Sheet**

Menagerie Carousel
Name of Property
Alamance County, North Carolina
County and State
82003420
NR Reference Number

8. Statement of Significance

The Menagerie Carousel was originally listed under Criteria A and C with Commerce, Entertainment/Recreation, and Art as areas of significance. Removal of the carousel from its original site and shelter severed the necessary associations that are required to satisfy Criterion A for its Commerce significance.

In its new location, the Menagerie Carousel retains a relatively high degree of historic integrity across all seven aspects. The property is able to convey its historic associations in its new location primarily because the new location is within Burlington’s City Park and is only a short distance from its original location. Although moved, the restored carousel continues to function as a local attraction intended to attract and entertain visitors and unite the community. For this reason, the carousel remains significant under *Criterion A* in the area of Entertainment/Recreation. The restored carousel is once again a fine piece of interactive and functional artwork with a high degree of craftsmanship and artistic skill. For this reason, the carousel remains significant under *Criterion C* in the area of Art. The carousel also meets *Criteria Consideration B: Moved Properties* in its new location for reasons already cited in this submission. The Menagerie Carousel should remain listed in the National Register of Historic Places in its new location.

Statement of Archaeological Potential

The City of Burlington consulted with the North Carolina Office of State Archaeology (OSA) regarding the potential for archaeological significance associated with the proposed new location. Staff with the City of Burlington provided the OSA with the Carousel’s new location. With this information and after consulting with archaeological site files as well as various maps (e.g., aerial imagery, topographical maps, and historic maps), John Mintz, retired State Archaeologist with OSA, informed the City that the proposed new location possessed a high potential for significant archaeological resources to be present.

Section 10. Geographical Data

Acreage of Property 0.87 acre

Latitude/Longitude Coordinates

1. Latitude: 36.084711 Longitude: -79.452382

Verbal Boundary Description

The National Register boundary is delineated by a heavy black line on the attached map entitled “Burlington Menagerie Carousel Boundary Map.” The boundary reflects the legal metes and bounds of parcel number 8864798898.

Verbal Boundary Justification

United States Department of the Interior
National Park Service

National Register of Historic Places
Continuation Sheet

Menagerie Carousel

Name of Property
Alamance County, North Carolina

County and State
82003420

NR Reference Number

Unlike the original National Register boundary which was drawn tightly around the structure that housed the carousel, the new National Register boundary includes the entire parcel that the Menagerie Carousel now occupies. Originally a portion of land historically associated with the adjacent Young Men’s Christian Association (YMCA) facility in Burlington, the new National Register boundary reflects the change in ownership of the parcel. A general warranty deed dated June 30, 2020, and recorded in Deed book 0416 and page 0694-0696 transferred title from the Community Young Men’s Christian Association of Alamance County, Inc., a North Carolina corporation, to the City of Burlington, a municipal corporation of the State of North Carolina.

The legal description of the parcel follows:

Being a certain tract or parcel of land located in Burlington Township, City of Burlington, Alamance County, North Carolina and being more particularly described as follows: Beginning at an existing iron pipe in the south right of way line of S. Main Street and being a common corner with the City of Burlington, said point having North Carolina Grid Coordinates of N: 850136.87 and E: 1866298.53; thence with the south right of way line of S. Main Street a bearing of N73°47'08"E for a distance of 61.96’ to a computed point; thence with the south right of way line of S. Main Street, a bearing of N76°08'56"E for a distance of 77.06’ to computed point in the south right of way line of S. Main Street and being a new line with the City of Burlington; thence with the new line a bearing of S10°10'05"E for a distance of 295.22’ to a computed point being a line with the City of Burlington, thence with the line of the City of Burlington a bearing of S79°52'32"W for a distance of 4.04’ to computed point; thence with the line of the City of Burlington a bearing of N13°27'28"W for a distance of 135.00’ to computed point; thence with the line of the City of Burlington a bearing a bearing of S77°19'53"W for a distance of 117.58’ to a computed point; thence with the line of the City of Burlington a bearing of N13°37'01"W for a distance of 83.20’ to a computed point; thence with the line of the City of Burlington a bearing of N13°35'52"W for a distance of 71.17’ the place and point of beginning.

Containing 0.51 acres+-, according to a survey dated December 3, 2019 by Jeffery H. Rudd, PLS L-4009, as shown on the City of Burlington Engineering Drawing Number 4491-20. The plat map that is referenced in the legal description is provided below and is being submitted as the site plan.

United States Department of the Interior National Park Service

National Register of Historic Places Continuation Sheet

Menagerie Carousel
 Name of Property
 Alamance County, North Carolina
 County and State
 82003420
 NR Reference Number

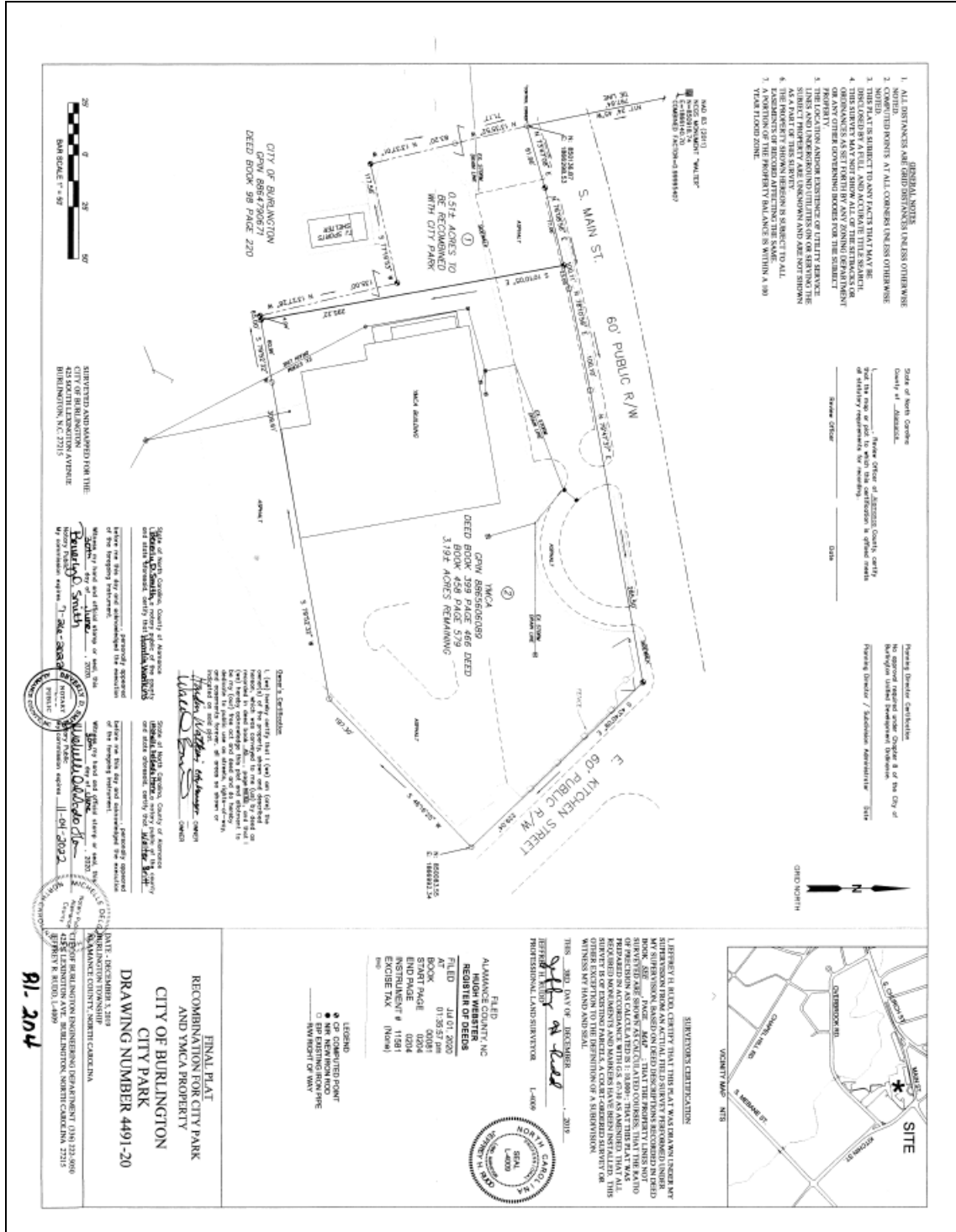


Figure 4: Site Plan, Menagerie Carousel 1386 S. Main St., Burlington, NC

United States Department of the Interior
National Park Service

National Register of Historic Places
Continuation Sheet

Menagerie Carousel
Name of Property
Alamance County, North Carolina
County and State
82003420
NR Reference Number

11. Form Prepared By

name/title: Jeffrey S. Smith, National Register Coordinator (NCHPO) w/ information from Rachel Kelly, City of Burlington Planning Office

organization: North Carolina State Historic Preservation Office

street & number: 109 E. Jones Street

city or town: Raleigh state: NC zip code: 27601

e-mail: jeff.smith@dncr.nc.gov

telephone: 919.814.6698

date: 10 December 2023

Additional Documentation

The following items are being submitted in accordance with 36 CFR 60.14(b) as part of the final submission following the relocation of the National Register-listed Menagerie Carousel:

Maps: A USGS map that indicates the property’s current location (as well as its former/original location)

Sketch Map/Photo Key

Additional items: Location map, Topo map, Site plan, and Jeffery Rudd survey plat

Photographs (Photo Log)

Name of Property: Menagerie Carousel

City of Vicinity: Burlington

County: Alamance

State: NC

Photographers: Rachel Kelly (carousel images) & Danny Nickle (exterior images)

Date Photographed: 2022 (carousel images) & 2023 (exterior images)

Description of Photographs and number:

0001 of 0025: SE elevation with park signage in foreground, facing NW

0002 of 0025 East elevation, facing west toward main entrance

0003 of 0025: N:E elevation along back patio, rear extension/addition along west side of Carousel House, facing SW

United States Department of the Interior
National Park Service

National Register of Historic Places
Continuation Sheet

Menagerie Carousel
Name of Property
Alamance County, North Carolina
County and State
82003420
NR Reference Number

Description of Photographs and number (continued):

0004 of 0025: North elevation (partial) of Carousel house and west extension addition, facing SW

0005 of 0025: East elevation (patio view) facing west toward new Carousel House

0006 of 0025: South elevation, view of Carousel House + west extension, facing NW

0007 of 0025: South elevation, Carousel House pivot door detail, facing NE

0008 of 0025: Overall site view, original carousel house in foreground, new in background, facing NW

0009 of 0025: Representational photo: the hare

0010 of 0025: Representational photo: the grey mare

0011 of 0025: Representational photo: the calico cat (with a fish in cat's mouth)

0012 of 0025: Representational photo: the pinto pony

0013 of 0025: Representational photo: the ostrich

0014 of 0025: Representational photo: the chestnut steed in front of a chariot car

0015 of 0025: Representational photo: the boar

0016 of 0025: Representational photo: the tan chariot

0017 of 0025: Representational photo: the brown steed

0018 of 0025: Representational photo: the blue chariot with phoenix

0019 of 0025: Representational photo: the gray and white mare

0020 of 0025: Representational photo: the tabby cat (with a fish in cat's mouth)

0021 of 0025: Representational photo: the lion

0022 of 0025: Representational photo: the stag

0023 of 0025: Representational photo: oval end panel & flanking oval mirrors

0024 of 0025: Representational photo: oval end panel & flanking oval mirrors

United States Department of the Interior
National Park Service

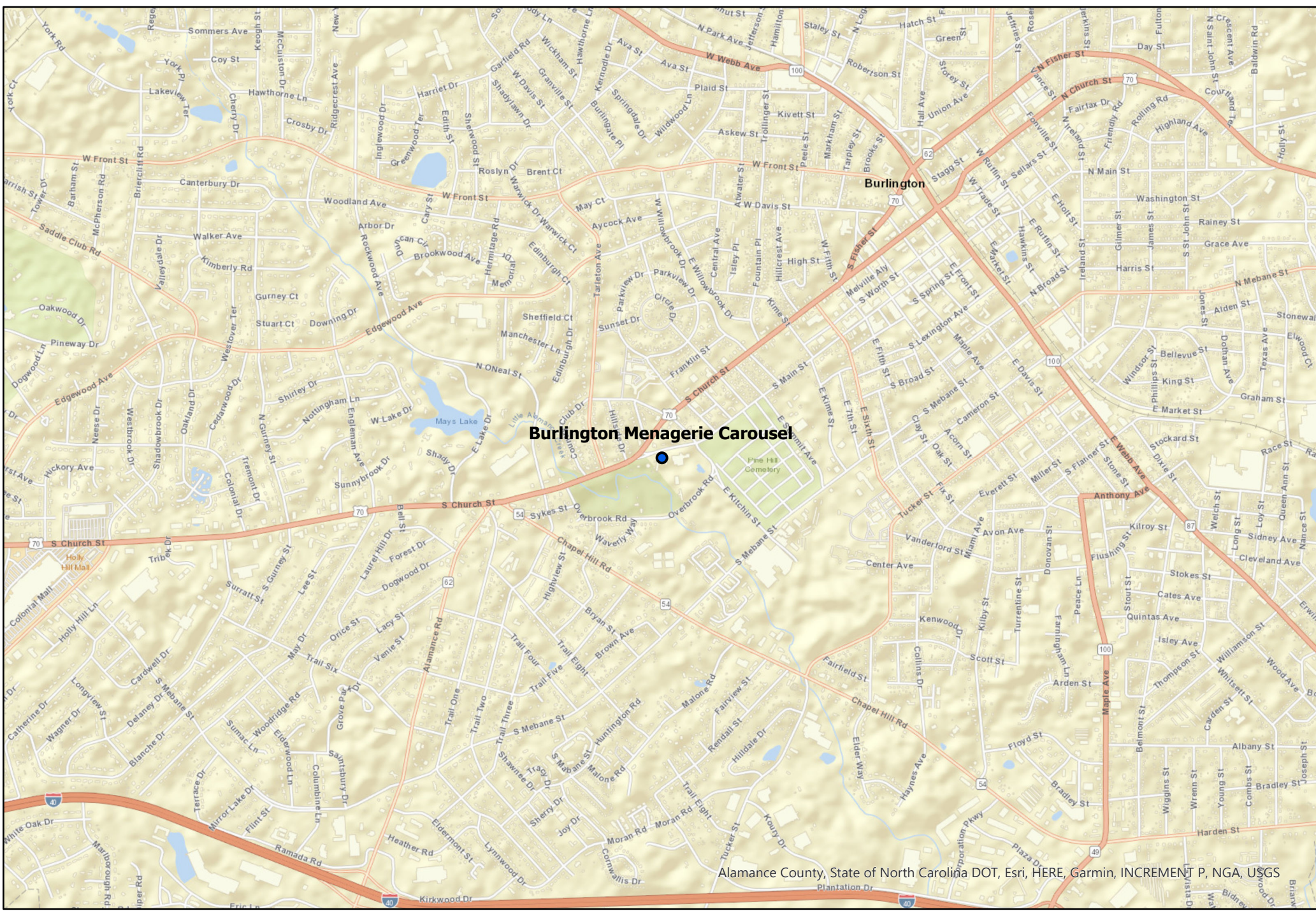
National Register of Historic Places
Continuation Sheet

Menagerie Carousel
Name of Property
Alamance County, North Carolina
County and State
82003420
NR Reference Number

0025 of 0025: Ride attendant's booth

Property Owner:

Mayor Jim Butler
City of Burlington
425 S Lexington Avenue
P.O. Box 1358
Burlington, NC 27216



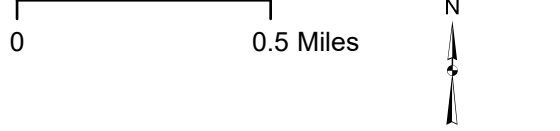
Alamance County, State of North Carolina DOT, Esri, HERE, Garmin, INCREMENT P, NGA, USGS

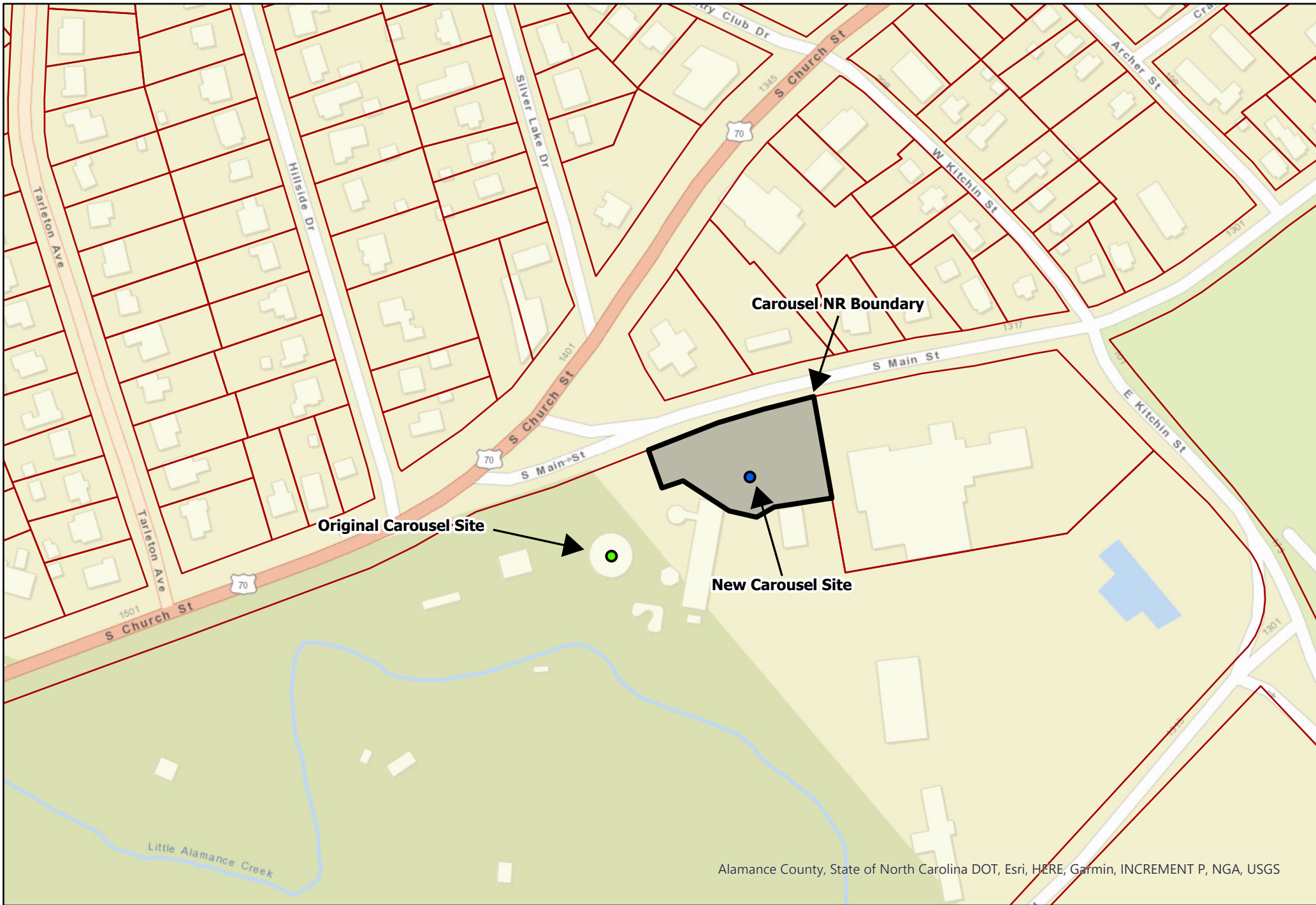


Disclaimer:
 This map was compiled from the GIS resources of the Burlington Regional GIS Partnership for public planning and agency support purposes. These resources include public information sources of different scale, time, origin, definition and accuracy, which aspects produce inconsistencies among features represented together on this map. Neither the City of Burlington nor the Partnership shall be held liable for any errors in this map or supporting data. Primary public information sources from which this map was compiled, in conjunction with field surveys where required, must be consulted for the verification of the information contained within this map.

Burlington Menagerie Carousel Location Map

Lat: 36.084711 Long: -79.452382 Parcel: 8864798898
 1368 S Main St, Burlington, NC 27215





Alamance County, State of North Carolina DOT, Esri, HERE, Garmin, INCREMENT P, NGA, USGS



Disclaimer:
 This map was compiled from the GIS resources of the Burlington Regional GIS Partnership for public planning and agency support purposes. These resources include public information sources of different scale, time, origin, definition and accuracy, which aspects produce inconsistencies among features represented together on this map. Neither the City of Burlington nor the Partnership shall be held liable for any errors in this map or supporting data. Primary public information sources from which this map was compiled, in conjunction with field surveys where required, must be consulted for the verification of the information contained within this map.



Burlington Menagerie Carousel Boundary Map

Lat: 36.084711 Long: -79.452382 Parcel: 8864798898
 1368 S Main St, Burlington, NC 27215



- New Carousel Site
- Original Carousel Site
- Carousel NR Boundary
- Alamance County Tax Parcels